

# Phytophthora ramorum

## UK situation and EC regulation



# Summary

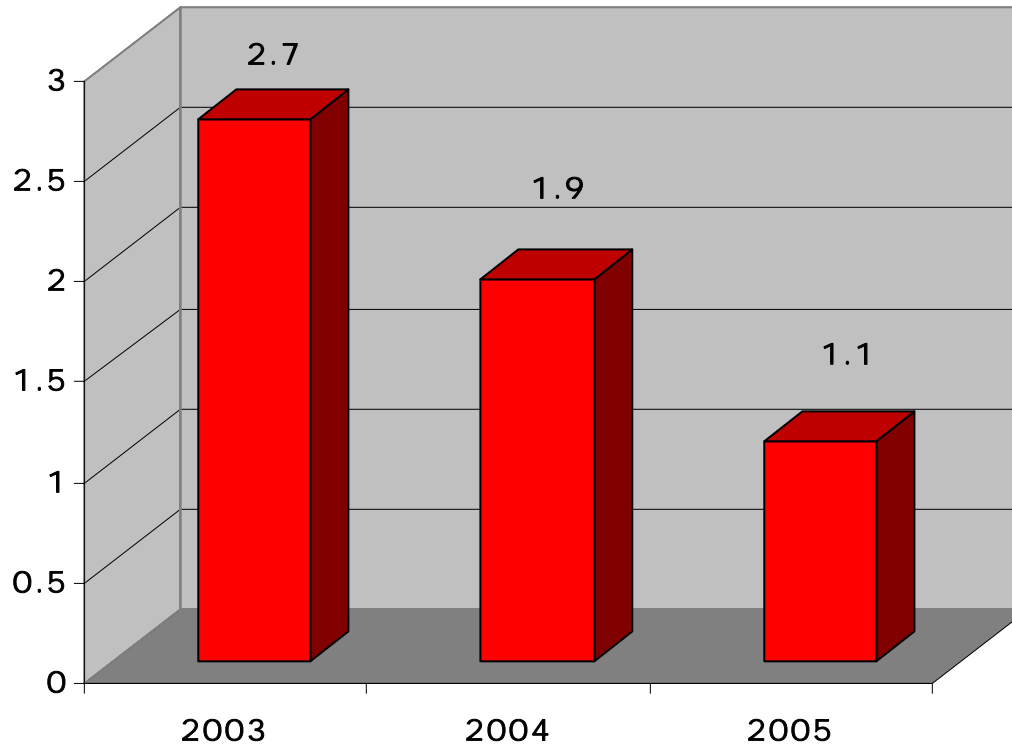
- 2002 UK finding and PRA
- 2002 EC emergency measures
- based on existing “plant passports”
- intensive surveys of nurseries
- surveys of gardens and woodland
- eradication left to Member States



Plant Health



## *Phytophthora ramorum* - % positive inspections in England and Wales



Plant Health



**defra**  
Department for Environment  
Food and Rural Affairs

# Interceptions of infected plants with passports

- 38 in 2003
- 4 in 2004
- 4 in 2005
- with increasing inspection levels, detection skill and testing capacity

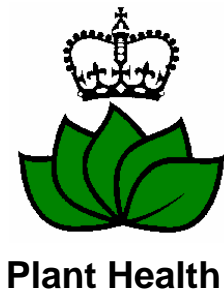


Plant Health

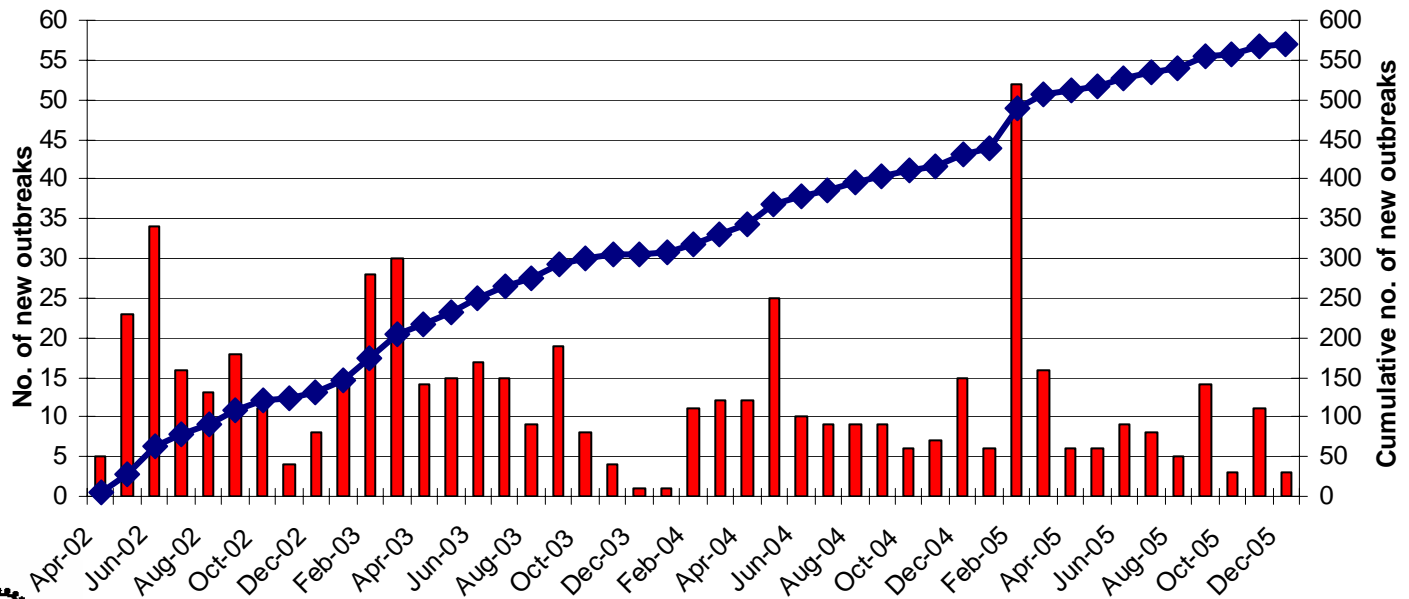


# Outbreaks at March 2006

- 553 outbreaks, of which
- 203 ongoing
- 146 on established plants
- statutory action requiring eradication or containment at all sites



## *Phytophthora ramorum* : Progress chart of findings (England & Wales)



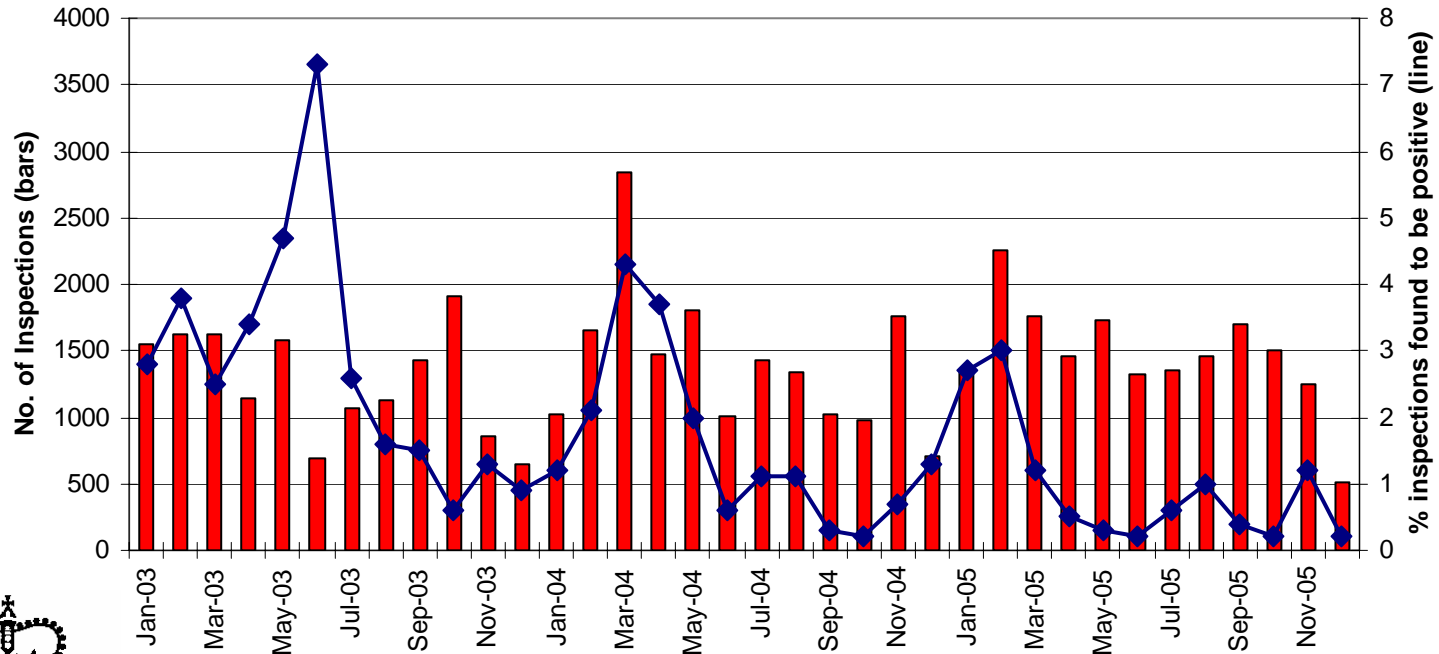
**Plant Health**



**defra**

Department for Environment  
Food and Rural Affairs

## *Phytophthora ramorum* : Commercial Sites Inspected & Positive Findings (England & Wales)



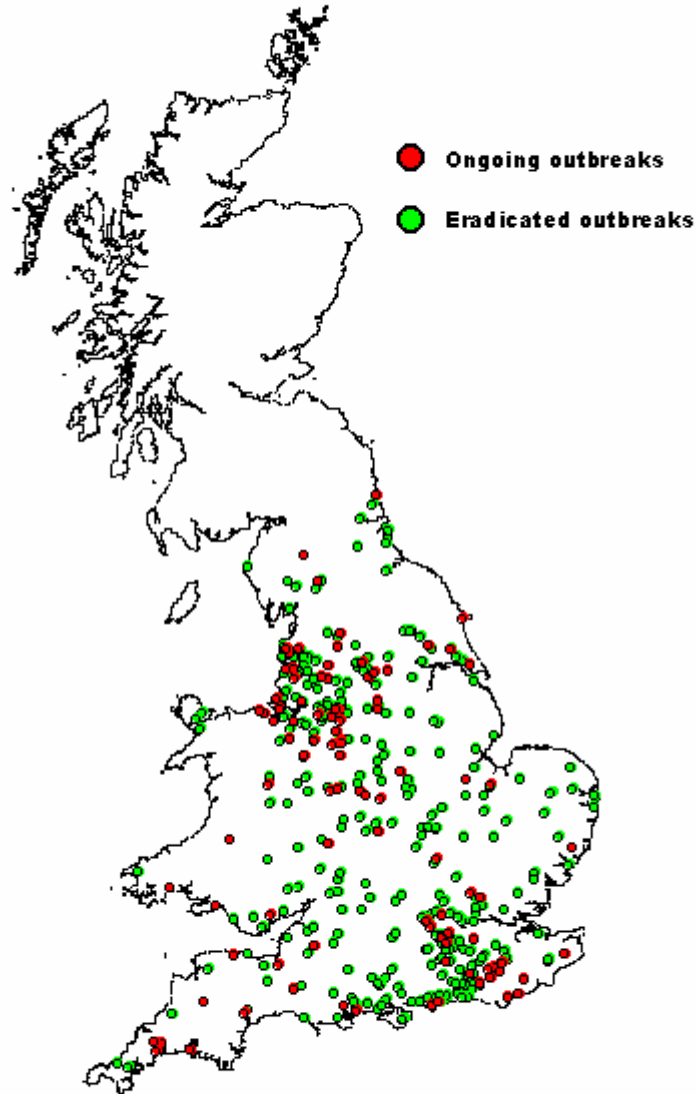
**Plant Health**



**defra**

Department for Environment  
Food and Rural Affairs

**Findings of *Phytophthora ramorum* on plants at  
retail & nursery sites in England & Wales  
2002 to 2006**



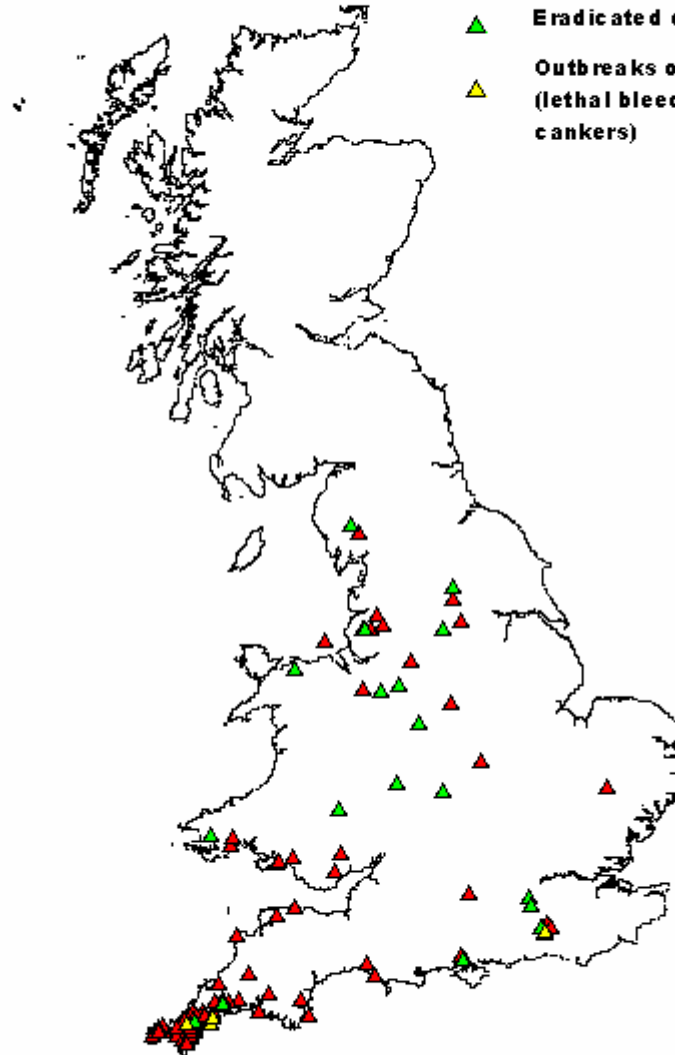
Plant Health

© Crown Copyright. All rights reserved Defra, Licence number 100018880 2006

Updated 09/02/2006

# Findings of *Phytophthora ramorum* on plants growing in established gardens, woods and other wild sites in England & Wales 2002 to 2006

- ▲ Ongoing outbreaks
- ▲ Eradicated outbreaks
- ▲ Outbreaks on trees (lethal bleeding cankers)



Plant Health

© Crown Copyright . All rights reserved Defra, Licence number 100018880 2006

Updated 09/02/2006



# Key features of campaign

- formal programme management
- precautionary action
- some additional resources
- burden sharing with industry
- disease management zones
- transparency and consultation



# *Phytophthora ramorum* - Distribution in Europe

## Present in

- Belgium
- Denmark
- France
- Germany
- Italy
- The Netherlands
- Norway
- Poland
- Slovenia
- Spain
- Republic of Ireland
- Sweden
- Switzerland
- United Kingdom including the Channel Islands.

## Absent from

- Austria
- Finland
- Portugal.

## No results for

- Greece
- Luxembourg.



Plant Health

# EC Regulation

- Commission Decision 2002/757
- amended by 2004/426
- introduction and spread banned



# Imports from USA

- from area known to be free ...  
or
- place of production found free ...  
from non-European isolates



# Movements within EC

- within and between Member States
- based on existing “plant passports”
- area known to be free  
or
- place of production found free  
or
- eradication measures taken



Plant Health



# Eradication measures on passporting nurseries

- destroy host plants within 2m
- hold host plants within 10m for 3 months
- no fungicide use on held plants
- two official inspections
- release if clear



Plant Health



# Containment measures at other sites

- “Member States shall take appropriate measures to at least contain the harmful organism. This may include the determination of the area concerned in which the measures shall be implemented.”



Plant Health



# UK containment & eradication

- nursery sites - no grants or compensation
- woodland - £350k allocated this year and next for targeted clearance of *Rhododendron ponticum* from high risk areas
- invasive alien, not part of native ecosystem (conveniently)



Plant Health

