



The Status of *P. ramorum* in Washington

Jennifer Falacy
Plant Pathologist
Washington State Department of
Agriculture

Summary

- 33 positive sites to date
 - 25 positive sites in 2004
 - 16 positive sites in 2005
 - 1 positive site so far in 2006
- 2005 repeat positives - 9 - completed the Confirmed Nursery Protocol (CNP)

Certification/Re-certification

- 150 Out-of-state host shippers
- 145 Non-host shippers

Six Eradication Nurseries

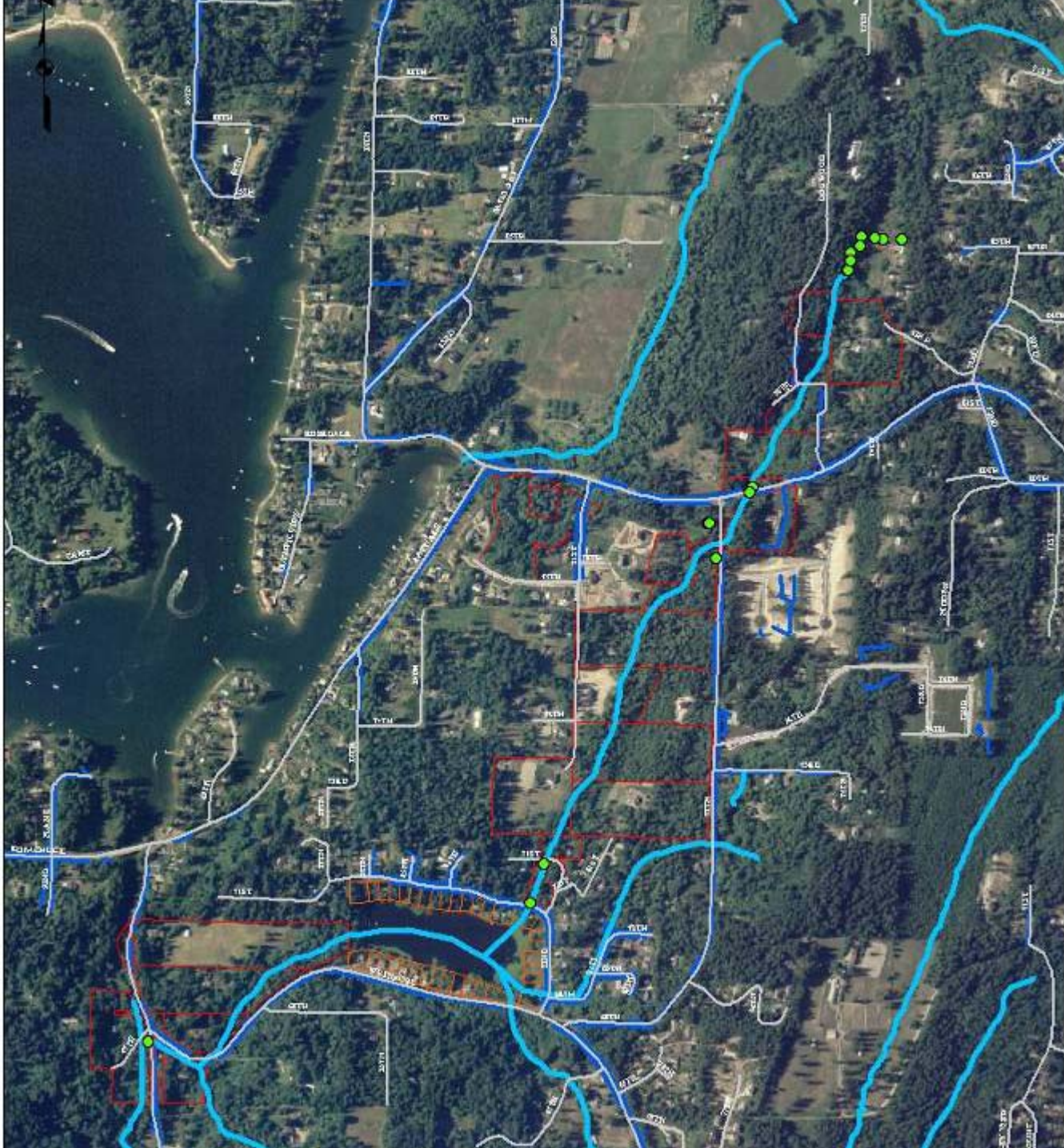
- 11 of 16 completed CNP 2005
- One new 2006 nursery in Kitsap County
- Two nurseries needing soil treatment
- Seasonal stream-baited positive downstream from positive nursery in Pierce County

Stream Baited Positive – Pierce Co. Kitsap Peninsula

- Location: Downstream and northwest of a positive nursery
- Process:
 - Susceptible Rhododendron leaves placed in mesh bags and suspended in stream.
 - Symptomatic material cultured in PARP
 - Colonies morphologically characteristic of *P. ramorum* were further tested using PCR

Positive Baited Stream

- Nursery positive in 2004
- Completed CNP / released from Emergency Action Notification (EAN) on July 2004
- Found positive again under National Survey
- Positive soil discovered on August 2005
- Soil delimited October 2005
- Stream positives resulted from baits placed Jan. 13 – 24, 2006 & Jan. 24 – Feb. 14, 2006

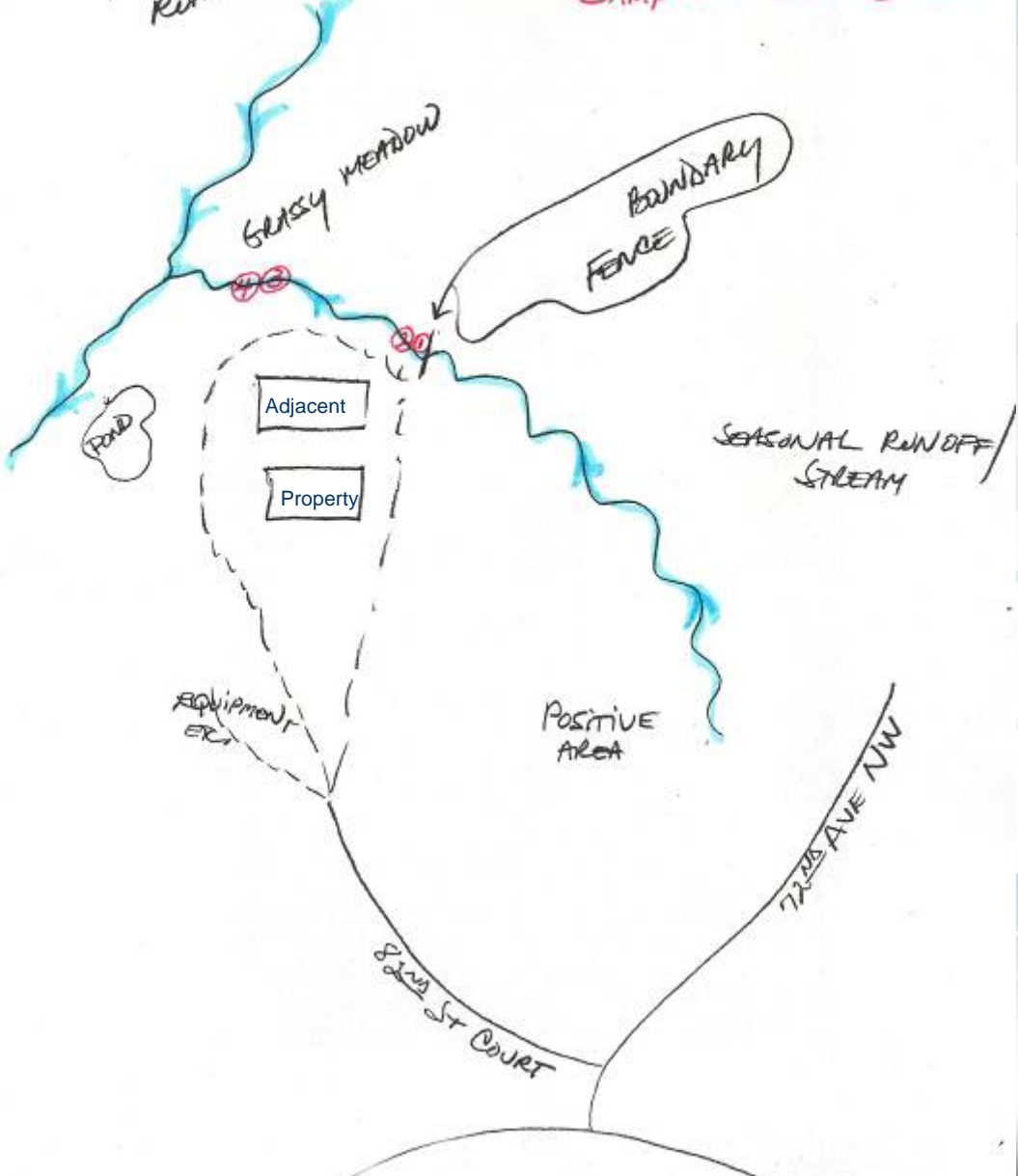


Stream Positive Nursery



LARGEST SEASONAL RUNOFF / STREAM

SAMPLES ① ② ③ ④





Potential Hosts

- Huckleberry
- Salmonberry
- Salal
- Madrone
- Big Leaf Maple

Plan of Action

- Survey plants used for baiting – tested negative
- Intensive monitoring (baiting) of stream and survey of watershed upstream and downstream to Sylvia Lake and beyond
- Intensive monitoring of plants used for baiting
- Soil treatment with Basamid in accordance with pesticide label (soil above 41° F)
- Soil to be monitored/delimited again