

Development of recommended
Best Management Practices
(rBMPs) for *Phytophthora*
ramorum

Marc Tefteau

Director of Research and Regulatory Affairs
American Nursery and Landscape Association
Horticultural Research Institute

Washington, D.C.



Drivers in This Process

- Continued disease presence
- Protection of the natural ecosystem
- Insure continuation of Interstate and Intrastate trade
- “Sunset” in 2007 of APHIS E.O.
- Regional concerns – CA,OR,WA
- State concerns – National Plant Board
- Bilateral (US – Canadian) trade

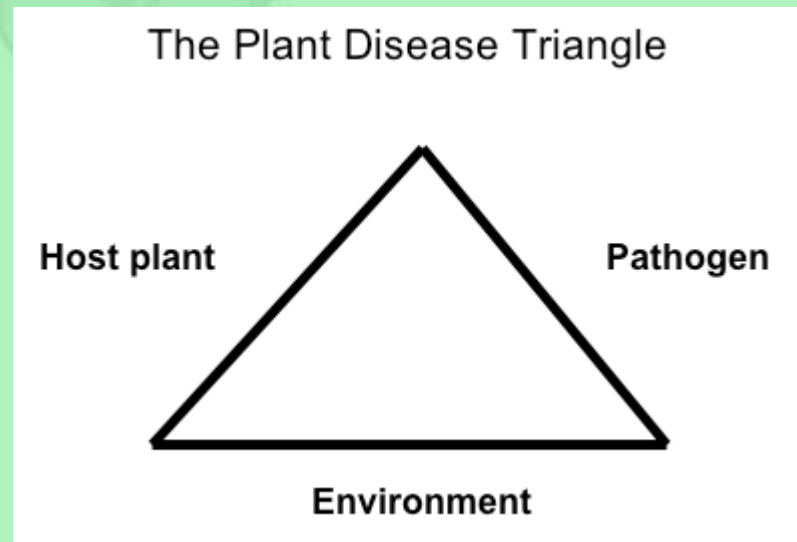


Criteria for Development of rBMPs

- Science based
- Verified, when possible with research
- Meet regulatory requirements
- Operationally practical for industry
- Cost effective
- Collaborative development & “vetting” to industry
- Reviewed by research, regulatory and industry communities.



rBMPs Related to Disease Triangle

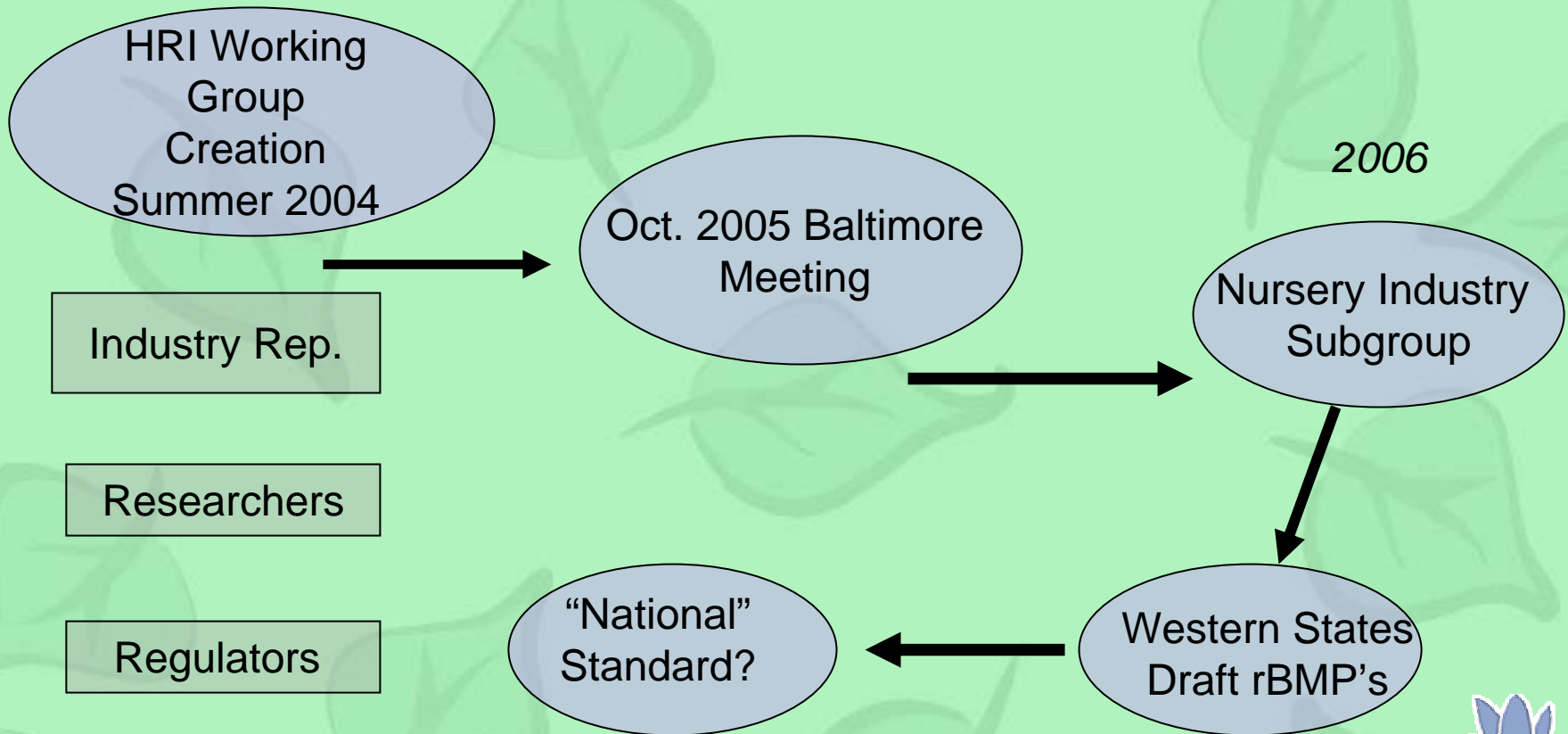


Collaborators

- CANGC
- OAN
- WSLNA
- CDFA
- ODA
- WSDA
- USDA – APHIS
- Nursery Operations
- Land Grant Univs.
- USDA - ARS
- ANLA/HRI
- National Plant Board



Development Process



Guidelines

- Meets USDA - APHIS requirements
- Equivalent to Canadian protocols
- Acceptable to non regulated States
- Acceptable to industry and can be implemented
- Mandatory and voluntary BMPS



Documentation Reviewed

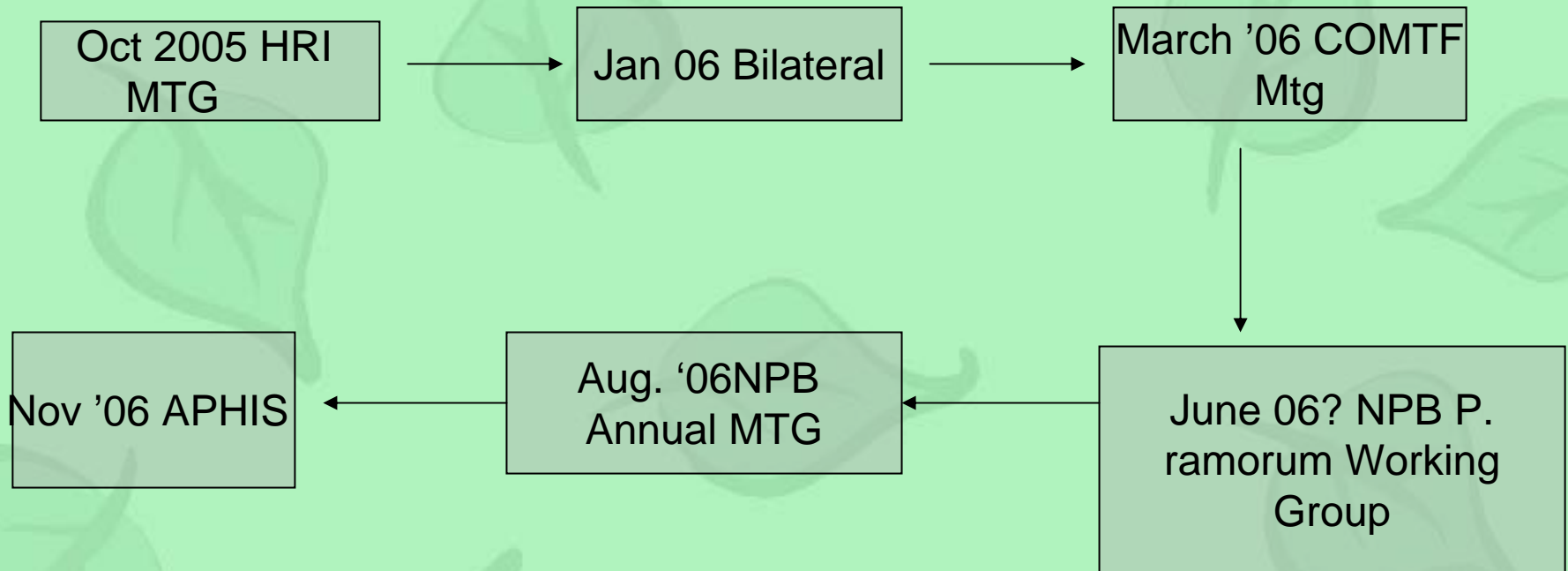
- USDA APHIS
 - Emergency Order
 - Certified Nursery Protocols v6
 - Trace Forward '06
 - RSPM 24
 - ISPM 10
- CDFA
- ODA
- CANGC
- OAN guidelines
- CFIA Protocols
- BC/CNLA effort



Basic Design

- Pest Prevention /Management
- Training
- Internal/External Monitoring/Audits
- Records/Traceability
- Documentation of Program Procedures

Current Projected Timeline - 2006



National Standard

- Meets regulatory requirements
- Adopted by industry
- Standards Development Organization approach
- Certification and Implementation methods
- HACCP concept/systems approach

