



STATE OF CALIFORNIA
DEPARTMENT OF FOOD AND
AGRICULTURE
1220 N Street, Room A-372
Sacramento, CA 95814

PEST EXCLUSION ADVISORY

NO. 19-2003

DATE: July 3, 2003
TO: All County Agricultural Commissioners
FROM: Plant Health and Pest Prevention Services
SUBJECT: *Phytophthora ramorum* A1 Mating Type

In May 2003, the Oregon Department of Agriculture (ODA) reported the detection of *Phytophthora ramorum* in Viburnum, Pieris, and Rhododendron plants at Furney's Nursery of Clackamas County, Oregon. The ODA recently confirmed the mating type of *P. ramorum* found at Furney's Nursery is the A1, or European, mating type (the *P. ramorum* mating type found in the twelve infested counties in California and portions of Curry County, Oregon is the A2 mating type). According to the ODA, plants from the infected lots were shipped to other nurseries in Oregon and Washington. After an exhaustive trace back effort to determine the origin of the plants that caused the outbreak, the ODA contends that it is likely that the infected plants, Rhododendron "Unique", originated in a nursery in British Columbia, Canada, and were shipped to Furney's Nursery of Oregon via their sister nursery in Des Moines, Washington. The infestations at these nurseries are considered quarantine incidents and the United States Department of Agriculture does not intend to add portions of either state to the federal domestic quarantine at this time.

In order to prevent the introduction of the A1 mating type of *P. ramorum* into California, the Department has removed all *P. ramorum* hosts and associated hosts from the Origin Inspection Program. Additionally, all *P. ramorum* hosts and associated hosts from Oregon, Washington, and British Columbia, Canada will be sent under quarantine hold for inspection at destination. County inspectors are advised to inspect all *P. ramorum* hosts and associated host plants for symptoms of the disease.

Please see the images on the following page for symptoms on Camellia, Viburnum, Pieris, and Rhododendron.

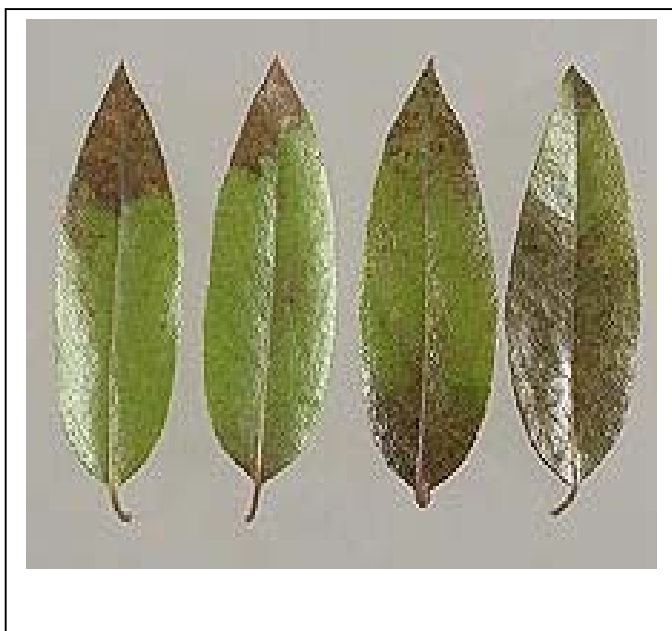
Attached is the current list of *P. ramorum* hosts, and associated hosts.



Camellia



Viburnum



Pieris



Rhododendron

Plant species regulated for *Phytophthora ramorum* (these are regulated in whole or in part – see www.aphis.usda.gov/ppq/ispm/sod)

Scientific Name	Common Name
<i>Acer macrophyllum</i>	Bigleaf maple
<i>Aesculus californica</i>	California buckeye
<i>Arbutus menziesii</i>	Madrone
<i>Arctostaphylos manzanita</i>	Manzanita
<i>Camellia japonica</i>	Camellia
<i>Heteromeles arbutifolia</i>	Toyon
<i>Lithocarpus densiflorus</i>	Tanoak
<i>Lonicera hispidula</i>	California honeysuckle
<i>Pieris formosa</i>	Andromeda
<i>Pseudotsuga menziesii</i> var. <i>menziesii</i>	Douglas-fir
<i>Quercus agrifolia</i>	Coast live oak
<i>Quercus chrysolepis</i>	Canyon live oak
<i>Quercus kelloggii</i>	California black oak
<i>Quercus parvula</i> v. <i>shrevei</i>	Shreve oak
<i>Rhamnus californica</i>	California coffeeberry
<i>Rhododendron</i> spp	Rhododendron
<i>Sequoia sempervirens</i>	Coast redwood
<i>Trientalis latifolia</i>	Western starflower
<i>Umbellularia californica</i>	California bay laurel, pepperwood, Oregon myrtle
<i>Vaccinium ovatum</i>	Huckleberry
<i>Viburnum x bodnantense</i>	Bodnant Viburnum
<i>Viburnum tinus</i>	Laurustinus

Plant species associated with *P. ramorum*, not currently regulated

Scientific Name	Common Name, Date & Source of Report
<i>Abies grandis</i>	Grand fir – June 03 (1)
<i>Arbutus unedo</i>	Strawberry tree – Dec 02 (7)
<i>Camellia sasanqua</i>	Camellia – June 03 (1)
<i>Corylus cornuta</i>	California hazelnut, – Dec 02 (5)
<i>Kalmia latifolia</i>	Mountain laurel – Fall 02 (3)
<i>Rhamnus purshiana</i>	Cascara – Hanson, Dec 02
<i>Pieris formosa x japonica</i>	Forest Flame Andromeda – June 03 (2)
<i>Pieris floribunda x japonica</i>	Brouwer's Beauty Andromeda – June 03 (2)
<i>Pieris japonica</i>	Variegata and Flaming Silver Andromeda – June 03 (2)
<i>Pittosporum undulatum</i>	Victorian box – Dec 02 (6)
<i>Syringa</i> sp.	Lilac – 2003 (3)
<i>Toxicodendron diversiloba</i>	Poison oak – Dec 02 (4)
<i>Rubus spectabilis</i>	Salmonberry – Dec 02 (4)

<i>Vaccinium vitis-idaea</i>	Lingonberry – Poland, 2002 (reported by 3)
<i>Viburnum plicatum tomentosum</i>	Mariesii - Doublefile Viburnum – June 03 (2)

Last revised 27 June 2003

¹ California Department of Food and Agriculture

² Oregon Department of Agriculture

³ Department of Environment, Food, and Rural Affairs, UK

⁴ Everett Hanson, Oregon State University

⁵ David Rizzo, University of California – Davis

⁶ Mateo Garbelotto, University of California - Berkeley

⁷ Eduardo Moralejo, Instituto Mediterráneo de Estudios Avanzados, IMEDEA (CSIC-UIB) - Balearic Islands, Spain

Rationale for lists:

Plant species regulated for *Phytophthora ramorum*:

Regulated plants are those adapted from other regulated lists or were added upon completion, documentation and review of traditional Koch's postulates. Some are regulated in part (such as redwood and Douglas fir), others are regulated in their entirety (such as tanoak and western star flower). Details on regulated articles can be found via links to "Phytophthora ramorum 7 CFR 301.92" and "Recent Modifications to Phytophthora ramorum Regulations" at:

www.aphis.usda.gov/ppq/ispm/sod

Plant species associated with *P. ramorum*, not currently regulated:

Associated plants are those found in nature from which *P. ramorum* has been cultured or detected using PCR (Polymerase Chain Reaction). For each of these, traditional Koch's postulates have not yet been completed or documented and reviewed. Though not regulated and not requiring certification under *P. ramorum* regulations, these plants will be inspected in nurseries and Christmas tree plantations and, if symptoms observed, held from sale pending testing.

This list is subject to change. The most current version is posted at:

www.aphis.usda.gov/ppq/ispm/sod