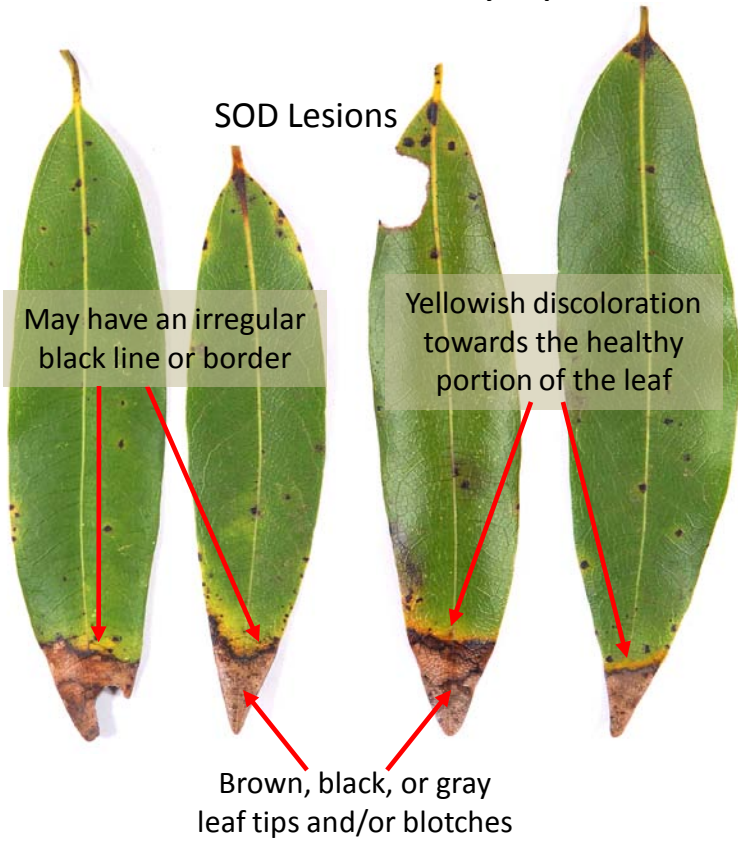
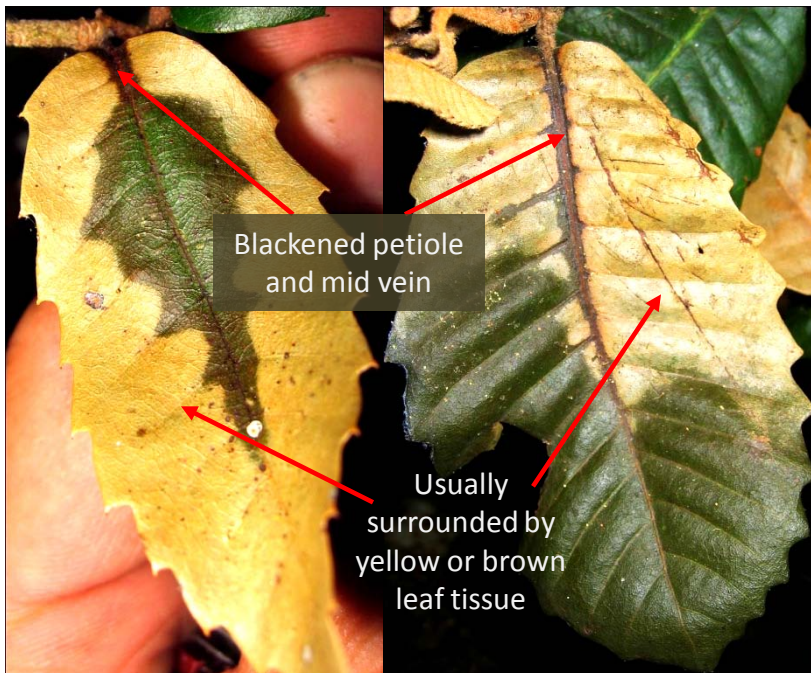


Sudden Oak Death Symptoms on California Bay Laurel



- Symptoms occur where water collects on the leaf.
- SOD lesions may appear on the edge or even the base of the stem depending on how the leaf is carried by the plant.

SOD Symptoms on Tanoak



Asymptomatic Tanoak



Leaf blotches on tanoak that are not SOD