

ARTICLE OPEN



Socio-ecological factors shape the distribution of a cultural keystone species in Malaysian Borneo

David J. Kurz^{1,2✉}, Thomas Connor¹, Jedediah F. Brodie^{3,4}, Esther L. Baking⁵, Sabrina H. Szeto^{6,7}, Andrew J. Hearn⁸, Penny C. Gardner^{9,10}, Oliver R. Wearn¹¹, Mairin C. M. Deith¹², Nicolas J. Deere¹³, Ahmad Ampeng¹⁴, Henry Bernard⁵, Jocelyn Goon¹⁰, Alys Granados¹⁵, Olga Helmy³, Hong-Ye Lim^{10,16}, Matthew Scott Luskin¹⁷, David W. Macdonald⁸, Joanna Ross⁸, Boyd K. Simpson¹⁸, Matthew J. Struebig¹³, Jayasilan Mohd-Azlan⁴, Matthew D. Potts¹, Benoit Goossens^{10,19,20,21} and Justin S. Brashares¹

Biophysical and socio-cultural factors have jointly shaped the distribution of global biodiversity, yet relatively few studies have quantitatively assessed the influence of social and ecological landscapes on wildlife distributions. We sought to determine whether social and ecological covariates shape the distribution of a cultural keystone species, the bearded pig (*Sus barbatus*). Drawing on a dataset of 295 total camera trap locations and 25,755 trap days across 18 field sites and three years in Sabah and Sarawak, Malaysian Borneo, we fitted occupancy models that incorporated socio-cultural covariates and ecological covariates hypothesized to influence bearded pig occupancy. We found that all competitive occupancy models included both socio-cultural and ecological covariates. Moreover, we found quantitative evidence supporting Indigenous pig hunting rights: predicted pig occupancy was positively associated with predicted high levels of Indigenous pig-hunting groups in low-accessibility areas, and predicted pig occupancy was positively associated with predicted medium and low levels of Indigenous pig-hunting groups in high-accessibility areas. These results suggest that bearded pig populations in Malaysian Borneo should be managed with context-specific strategies, promoting Indigenous pig hunting rights. We also provide important baseline information on bearded pig occupancy levels prior to the 2020–2021 outbreak of African Swine Fever (ASF), which caused social and ecological concerns after mass dieoffs of bearded pigs in Borneo. The abstract provided in Malay is in the Supplementary file.

npj Biodiversity (2023)2:4; <https://doi.org/10.1038/s44185-022-00008-w>

INTRODUCTION

Socio-cultural and biophysical landscapes are fundamentally connected. However, our empirical understanding of the links between them is still limited. While researchers often quantitatively examine links between biophysical factors and wildlife, far less quantitative work has been carried out on the influence of socio-cultural factors on wildlife distributions. Yet socio-cultural factors—such as ethnic identity, culturally-distinctive hunting practices, armed conflict, recreation, feasts, traditions, and value systems—have been shown to have far-reaching implications for animal behavior, wildlife distributions, and conservation efforts^{1–6}. As such, social and cultural practices, tolerances, affinities, and other socio-cultural factors require more attention as important predictor variables, alongside ecological variables, for determining occurrence patterns of wildlife species⁷.

A primary challenge has been integrating nuanced quantitative measures of socio-cultural factors into wildlife distribution modeling. Recently, socio-cultural covariates have begun to move

beyond broader indices of human disturbance or footprint to include culturally-shaped metrics, such as hunting accessibility, social carrying capacity for development, or religious practices^{8–10}. These more recently adopted metrics reflect an emerging understanding of the conceptual complexity of human-wildlife interactions, which take place within nested social and ecological systems¹¹. While the number of socio-ecological studies has increased dramatically in recent years¹², greater attention is needed to the integration of social and ecological variables in wildlife modeling¹³. However, relatively few robust case studies have leveraged the social and environmental data needed to quantify their joint influence on species distributions.

The bearded pig, *Sus barbatus*, is an ideal species for assessing the relative contribution of socio-cultural and ecological variables to wildlife distributions. Bearded pigs are sensitive to social factors, such as hunting practices, which can influence their local distribution and behavior^{6,14}. The bearded pig is also the most favored terrestrial game species for many non-Muslim Indigenous communities in Sabah and Sarawak, accounting for up to 54–97%

¹Department of Environmental Science, Policy, and Management, University of California, Berkeley, Berkeley, CA 94720, USA. ²Environmental Science Program, Trinity College, Hartford, CT 06106, USA. ³Division of Biological Sciences & Wildlife Biology Program, University of Montana, Missoula, MT 59812, USA. ⁴Institute of Biodiversity and Environmental Conservation, Universiti Malaysia Sarawak, 94300 Kota Samarahan, Sarawak, Malaysia. ⁵Institute for Tropical Biology and Conservation, Universiti Malaysia Sabah, 88450 Kota Kinabalu, Sabah, Malaysia. ⁶School of the Environment, Yale University, New Haven, CT 06511, USA. ⁷Sabrina Szeto Consulting, Isen, Bavaria 84424, Germany. ⁸Wildlife Conservation Research Unit, Department of Biology, The Reanati-Kaplan Centre, University of Oxford, Oxford, UK. ⁹RSPB UK Headquarters, The Lodge, Sandy, Bedfordshire SG19 2DL, UK. ¹⁰Danau Girang Field Centre, c/o Sabah Wildlife Department, Wisma Muis, Kota Kinabalu, Sabah, Malaysia. ¹¹Fauna & Flora International, Vietnam Programme, Hanoi, Vietnam. ¹²Institute for the Oceans and Fisheries, Faculty of Science, Vancouver Campus, The University of British Columbia, AERL, 2202 Main Mall, Vancouver, BC V6T 1Z4, Canada. ¹³Durrell Institute of Conservation and Ecology, School of Anthropology and Conservation, University of Kent, Canterbury, UK. ¹⁴Forest Department Sarawak, Level 15, East Wing, Bangunan Baitul Makmur II, Medan Raya, Petra Jaya, 93050 Kuching, Sarawak, Malaysia. ¹⁵Felidae Conservation Fund, 100 Shoreline Hwy, Suite 100B, Mill Valley, CA 94941, USA. ¹⁶Forever Sabah, H30, Gaya Park, Lorong Muntahan 1 C, Jalan Penampang, 88300 Kota Kinabalu, Sabah, Malaysia. ¹⁷School of Biological Sciences, University of Queensland, St. Lucia, QLD, Australia. ¹⁸Copenhagen Zoo, Department of Research & Conservation, Frederiksberg, Denmark. ¹⁹Organisms and Environment Division, School of Biosciences, Cardiff University, Cardiff, UK. ²⁰Sabah Wildlife Department, Wisma Muis, Kota Kinabalu, Sabah, Malaysia. ²¹Sustainable Places Research Institute, Cardiff University, Cardiff, UK. ✉email: david.kurz@berkeley.edu

of their wild meat^{14,15}. Within these communities, the bearded pig is still hunted using both historical approaches (e.g. dogs and spear, snare, nets) and contemporary methods (e.g. on foot with a gun, drive hunt)^{6,16}. Moreover, the species plays a central role in a variety of Indigenous ceremonial practices and celebrations¹⁷, including gifting of the meat to others, and the pig is also hunted for additional reasons, such as pest control, sport, and sale^{6,16}. However, among one pool of Indigenous pig hunters, only about a quarter reported hunting bearded pigs for sale, and several hunters felt that hunting for sale was unnecessary or irresponsible⁶. In Sabah and Sarawak, the largest Indigenous pig-hunting group makes up roughly 21 and 29% of the total population of each state, respectively, accounting for a substantial proportion of the population of each state¹⁸.

In our study area, bearded pig hunting has been a particularly salient cultural force for thousands of years^{6,19}. This hunting relationship is given further texture by the role of religion in shaping cultural affinities toward bearded pigs. In Sabah and Sarawak, religion and ethnicity are fairly closely linked. According to census data, 100% of Malays in both states are registered as Muslim, and roughly 75% of Kadazandusun-Muruts (KDM, an abbreviation used locally; KDMs are the primary pig-hunting Indigenous group in Sabah) and Ibans (the primary pig-hunting Indigenous group in Sarawak) identify as Christians¹⁸. Wild pork is highly favored by Christian KDM and Iban communities in Sabah and Sarawak^{6,14}, but pork is actively avoided in Muslim communities in Malaysia generally²⁰. Therefore, the role of bearded pig hunting in contemporary Malaysian Borneo also speaks to the role of religion in shaping socio-ecological interactions. Given these dynamics as well as the potential threat to pig populations posed by hunting^{14,21}, it is critical to better understand how ethnicity, and religious factors tied to ethnicity, may be related to hunting pressure and bearded pig distributions in Malaysian Borneo. It is also critical to understand the role of landscape accessibility and population density on bearded pig distributions, as both are likely to influence hunting pressure in the region¹⁰. Considering the ancient history of sustained pig hunting in Sabah²², it is possible that hunting practices in some areas may be neutral or positively associated with pig occupancies. However, with modern hunting techniques and extensive land-use change in Sabah and Sarawak, bearded pigs have experienced local declines and behavior change over time, complicating this question^{6,14}.

Physical ecological factors are also likely to shape the distribution of the bearded pig. The species is dependent on forest habitat for several of its behaviors, such as wallowing, nest building, and mud scraping²³. Additionally, its natural history is closely linked to Southeast Asian forest phenology due to its local and long-distance movements to track Dipterocarp fruit during mast fruiting events^{24–27}. Loss of Dipterocarp forests has not only led to fewer reports of nomadic movements in places⁶, but has also led to an estimated 23% decline in bearded pig habitat in Borneo²⁸. As forests have declined, fruit provision from Dipterocarps has been replaced in many areas by subsidies from oil palm plantations that fruit throughout most of their life-cycle^{21,23,29,30}. At fine scales, bearded pigs are known to be capable of sustaining populations in heavily logged areas with oil palm fruit subsidies^{23,31}, but it is unclear how forest and oil palm patchworks are shaping pig distribution at broad scales. As such, understanding the ecological correlates of pig distributions will help plan large landscape configurations that sustain healthy bearded pig populations.

Here, we integrate socio-cultural and ecological covariates to quantify their collective influence on the distribution of a cultural keystone species, the bearded pig. Specifically, we investigate the influence of two Indigenous, predominantly Christian pig-hunting groups on distributions of bearded pigs. By considering the influence of Indigenous hunting, alongside a metric of landscape accessibility and population density, we provide a link toward

understanding a broader suite of socio-cultural covariates on wildlife distributions. Selecting Malaysian Borneo as our study area allowed us to investigate socio-ecological dynamics by drawing from extensive camera trap surveys, a published hunting accessibility metric, and census data for Sabah and Sarawak. Analyzing data from 295 camera locations distributed across land-use, management, and socio-cultural contexts, we investigate how social and ecological factors together shape bearded pig occupancy. We ran occupancy models in a multi-model approach with top models ranked by AICc. Our results: (a) provide empirical associations between socio-ecological factors and the distribution of a large-bodied game species; (b) provide area-specific baseline evidence of bearded pig occupancies before the 2020–2021 African Swine Fever (ASF) outbreak; and (c) quantitatively show that Indigenous hunting in our study area can be compatible with high pig occupancies. In light of these findings, we discuss the implications of our results for context-specific bearded pig management in Sabah and Sarawak.

RESULTS

Overview of results

Our findings show that bearded pig distributions are associated with both social and ecological covariates in Malaysian Borneo. In particular, bearded pig occupancies are significantly negatively associated with one ecological covariate (distance to water) and with the interaction between two social covariates (pig-hunting group and hunting accessibility). In low and high accessibility areas, pig occupancy showed differing associations with percentage of the population belonging to an Indigenous pig-hunting group. In low accessibility areas, pig occupancy showed a positive association with a predicted high percentage of the population belonging to a pig-hunting group. In high accessibility areas, pig occupancy showed a positive association with a predicted medium to low percentage of the population belonging to a pig-hunting group. Additionally, estimated pig occupancies were relatively high across most study sites.

Bearded pig occupancy associations with socio-cultural and ecological factors

All top-ranking occupancy models included both socio-cultural and ecological covariates (Table 1). Pig occupancy was associated with four ecological covariates in competitive models: distance to forest edge, distance to water, slope, and tree cover. Pig occupancy was significantly negatively associated with distance to water in the model average of top models (Fig. 1). Occupancy probability was associated with three socio-cultural covariates in competitive models: hunting accessibility, the proportion of the district population composed of the KDM or Iban group (hereafter, “pig-hunting group”), and their interaction (Table 1). Pig occupancy was significantly negatively associated with the interaction between pig-hunting group and hunting accessibility in the model average of top models (Fig. 1). Elevation and protected area status were not present in the top models.

Interaction between Indigenous pig-hunting group and hunting accessibility

The interaction between pig-hunting group and hunting accessibility significantly negatively influenced pig occupancy in the model-averaged model (Fig. 1). At low levels of hunting accessibility, a prediction based on model-averaged results showed that pig occupancy was positively associated with a high level of pig-hunting group (Fig. 2). At high levels of hunting accessibility, the prediction based on model-averaged results showed that pig occupancy was positively associated with medium and low levels of pig-hunting group (Fig. 2).

Table 1. Top-ranked occupancy models.

Model	W	AICc	Δ AICc
$p(\text{eff}) + \psi(\text{dWat}) + \psi(\text{dFE}) + \psi(\text{PHgrp}) + \psi(\text{Access}) + \psi(\text{PHgrp} * \text{Access})$	0.066	4226.8	0.00
$p(\text{eff}) + \psi(\text{dWat}) + \psi(\text{PHgrp}) + \psi(\text{Access}) + \psi(\text{PHgrp} * \text{Access})$	0.059	4227.0	0.23
$p(\text{eff}) + p(\text{NT}) + \psi(\text{dWat}) + \psi(\text{dFE}) + \psi(\text{PHgrp}) + \psi(\text{Access}) + \psi(\text{PHgrp} * \text{Access})$	0.035	4228.1	1.30
$p(\text{eff}) + \psi(\text{dWat}) + \psi(\text{PHgrp}) + \psi(\text{Access}) + \psi(\text{TC}) + \psi(\text{PHgrp} * \text{Access})$	0.033	4228.2	1.40
$p(\text{eff}) + \psi(\text{dWat}) + \psi(\text{dFE}) + \psi(\text{PHgrp}) + \psi(\text{Access}) + \psi(\text{TC}) + \psi(\text{PHgrp} * \text{Access})$	0.031	4228.3	1.50
$p(\text{eff}) + p(\text{NT}) + \psi(\text{dWat}) + \psi(\text{PHgrp}) + \psi(\text{Access}) + \psi(\text{PHgrp} * \text{Access})$	0.031	4228.3	1.52
$p(\text{eff}) + \psi(\text{dWat}) + \psi(\text{dFE}) + \psi(\text{PHgrp}) + \psi(\text{Access}) + \psi(\text{slp}) + \psi(\text{PHgrp} * \text{Access})$	0.025	4228.7	1.94

Occupancy models within $<2 \Delta$ AICc of the top ranked model; “p” indicates detection probability and “ ψ ” indicates occupancy probability. “Model” shows the variables present in the model, “W” indicates model weight, “AICc” indicates corrected Akaike Information Criterion, and Δ AICc indicates the difference in the AICc between the model and the top model. [Covariate abbreviations are: Access = Hunting accessibility; dFE = distance to forest edge; dWat = distance to water; eff = sampling effort; NT = non-tree vegetation cover; PHgrp = Pig-hunting group; TC = Tree cover; slp = Slope; PHgrp*Access = Interaction of pig-hunting group and hunting accessibility].

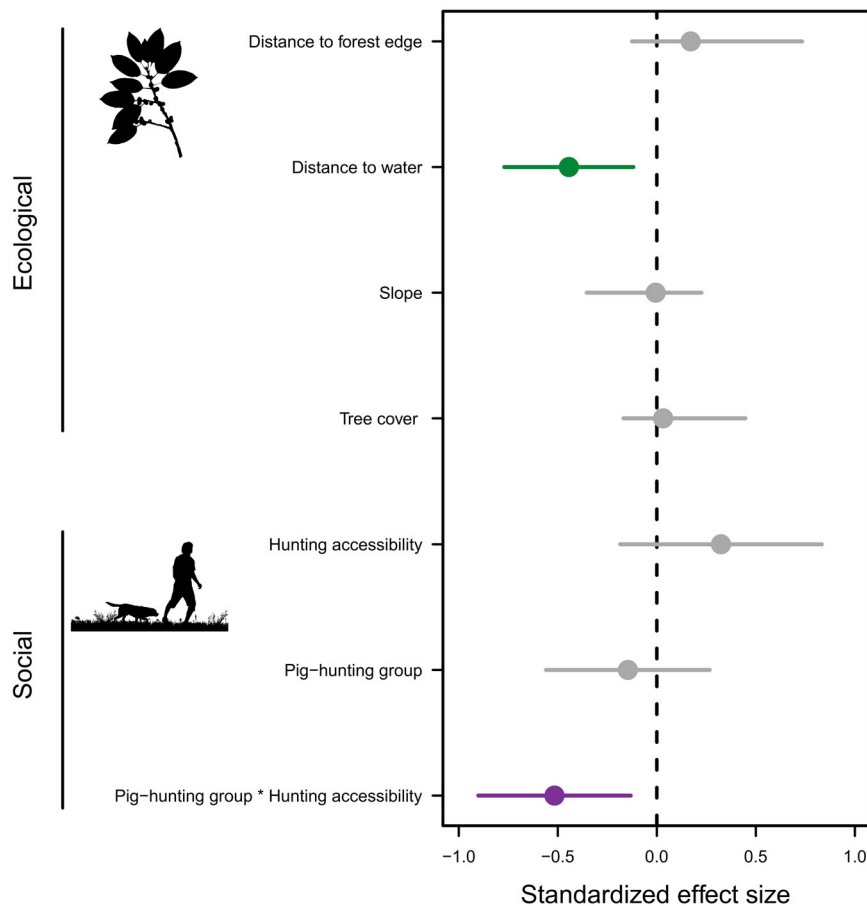


Fig. 1 Standardized effect size median values and 95% confidence intervals (CI) for all occupancy covariates in model average of top models within $<2 \Delta$ AICc of the top model. Pig occupancy is associated with all covariates in the model-averaged model; however, the influence of covariates with 95% CI that do not overlap with zero can be considered significant. Silhouettes are made available for use through a CC0 1.0 license (top) and a standard license agreement (bottom).

Estimated occupancy values and detection associations

Our results show relatively high occupancy estimates of bearded pigs across most sites within our study area in Sabah and Sarawak (Table 2). Predicted average bearded pig occupancy across all study sites from our model-averaged occupancy models was 0.70 (95% CI [0.57, 0.81]). Predicted average bearded pig occupancy per site ranged from 0.92 (95% CI [0.74, 0.97]) at Danum Valley Conservation Area to 0.35 (95% CI [0.21, 0.52]) at Crocker Range National Park (Table 2). Notably, relatively high and low estimated

pig occupancies were present in Sabah and Sarawak, in protected and unprotected areas, in primary and secondary forests, and in hill and montane forests.

Bearded pig detection was associated with two covariates in the model average of top models: sampling effort and non-tree vegetation cover. Detection was significantly positively associated with sampling effort in the model average of competitive models (standardized effect size = 0.296, 95% CI [0.202, 0.389]). Non-tree vegetation cover was present in only two top models (Table 1),

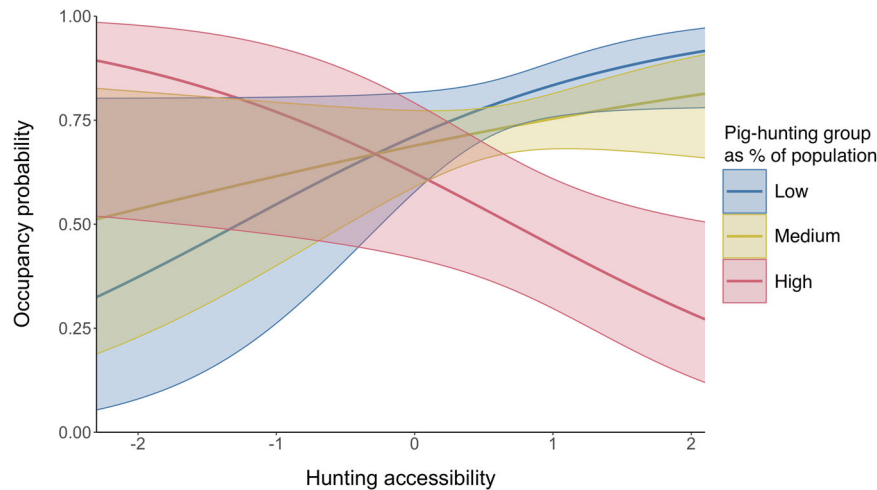


Fig. 2 Plot showing a prediction, based on the model-averaged results, of the interaction between pig-hunting group and hunting accessibility, while holding other covariates constant. Bands show 95% confidence intervals. Percent is standardized.

Table 2. Estimated occupancy probabilities for bearded pigs across study sites in Malaysian Borneo.

Site	Pred. occupancy	95% CI
Crocker Range National Park	0.35	[0.21, 0.52]
Danum Valley Conservation Area	0.92	[0.74, 0.97]
Gunung Mulu National Park	0.51	[0.32, 0.71]
Hose Mountains	0.66	[0.37, 0.86]
Lower Kinabatangan Wildlife Sanctuary	0.85	[0.76, 0.92]
Madai Baturong	0.90	[0.78, 0.96]
Maliau Basin Conservation Area	0.76	[0.64, 0.84]
Malua Forest Reserve	0.77	[0.61, 0.87]
Pulong Tau National Park	0.74	[0.61, 0.83]
SAFE Project	0.73	[0.57, 0.85]
Sapulut	0.37	[0.23, 0.54]
Silabukan	0.80	[0.69, 0.88]
Sipitang	0.77	[0.66, 0.86]
Tabin Wildlife Reserve	0.78	[0.64, 0.87]
Tawau Hills Park	0.79	[0.64, 0.88]
Ulu Baram	0.61	[0.46, 0.74]
Ulu Padas	0.70	[0.60, 0.79]
Ulu Trusan	0.78	[0.68, 0.85]

Occupancy probability estimates were based on data from sampling in 2010, 2012, and 2014, prior to the outbreak of African Swine Fever in 2021. Occupancy estimates for most sites drew from data from a single year. Occupancy probability predictions are based on model-averaged results.

and pig detection was not significantly associated with non-tree vegetation cover in the model average of top models (standardized effect size = -0.009 , 95% CI [-0.122 , 0.045]).

DISCUSSION

Our results provide robust, quantitative evidence that socio-cultural and ecological factors underpin the spatial distribution of a large-bodied game species. By demonstrating the importance of socio-ecological drivers in wildlife distribution modeling for this species, our approach goes beyond many conventional modeling frameworks that consider ecological factors in isolation or that use broad indices of human footprint. Furthermore, we quantitatively

show that Indigenous pig hunting is potentially compatible with high bearded pig occupancy. Our data point to the importance of context-specific Indigenous and local management; sustainable, locally-led Indigenous pig hunting may be well-suited to low accessibility areas and may be feasible in some high accessibility areas with thresholds collaboratively agreed upon by Indigenous and state decision makers. Additionally, our occupancy predictions show relatively high pig occupancies across many sites, from camera surveys prior to the 2020–2021 ASF outbreak, suggesting that a full bearded pig recovery from ASF could help sustain Indigenous pig hunting and robust bearded pig populations.

Socio-cultural covariates were predictors of bearded pig occupancy, highlighting the relevance of cultural practices for wildlife distributions. While conceptual models of socio-ecological systems are continuing to develop¹¹, and urban ecology has embraced human demographics and cultural practices in wildlife distribution assessments^{32,33}, we assert that it is critical to normalize more fully the integration of socio-cultural practices into wildlife ecology and conservation. Published accessibility maps, census data, and government-collected social data provide opportunities for such quantitative integration with wildlife data from camera traps, surveys, acoustic data recorders, citizen science datasets, and integrated databases^{34,35}. In our study context, social landscapes and ecological landscapes share important intersections. For example, hunter movements are strongly associated with landscape characteristics across Malaysian Borneo¹⁰. Our results build on this link by showing that the interaction between hunting accessibility and pig-hunting cultural groups is associated with a game species response.

Pig-hunting group and hunting accessibility showed a strong interaction, with important lessons for socio-ecological theory and wildlife management. At low levels of hunting accessibility, predicted pig occupancy was positively associated with a predicted high level of pig-hunting group. At high levels of the hunting accessibility metric (which includes population density), predicted pig occupancy was negatively associated with a predicted high level of pig-hunting group. However, in high accessibility areas, predicted pig occupancy was positively associated with predicted medium and low levels of pig-hunting group. These findings highlight the importance of population density, landscape topography, and human culture in jointly shaping sustainable Indigenous hunting in context-specific ways. The role and relevance of ethnicity and religion, including cultural practices, in theoretical and empirical studies of wildlife distribution have been too often overlooked. Robust cultural traditions

have important implications for conservation value formation³⁶, and social practices shape wildlife utilization patterns across the globe^{6,37,38}. Our findings validate this theoretical consideration by empirically demonstrating the connections between pig-hunting cultural group, hunting accessibility, and bearded pig occupancies in Malaysian Borneo.

In our study region, ethnic identification is linked to religion, leading to additional cultural implications for bearded pig hunting. The majority of KDM and Iban communities identify as Christian (although a minority are Muslim), and the vast majority of Malays identify as Muslim¹⁸. These ethno-religious identifications add an additional layer of group identity to pig hunting practices and dietary choices. In fact, food practices rooted in religion and ethnicity are so strong in our study area that a “pig line” has been recorded in Sarawak between Muslim fishing communities along the coast and Christian pig-hunting communities in the interior³⁹. Our results show that two Indigenous, Christian hunting traditions—by Iban and KDM groups—shape bearded pig distributions, and may continue to be compatible with bearded pig conservation. While ethno-religious traditions have been linked to harvest of wild animals and plants^{40–42}, relatively few studies have quantitatively explored these connections. Therefore, by showing ethno-religious influences on bearded pig occupancy, our findings make a compelling case for the wider relevance of cultural factors on wildlife utilization patterns generally.

Our study focused on the influence of socio-ecological factors on occupancy, and did not include density estimates within the scope of our analysis. Bearded pigs have a number of population states of varying densities under different environmental conditions⁴³, presumably resulting in varying levels of resilience to hunting pressure. In areas with plentiful food resources and high pig densities, bearded pig resilience to hunting could be high; indeed, during resource-rich mast fruiting periods, female bearded pigs can give birth to 10–30 piglets in a single year²⁵. In Sabah, older pig hunters recall pig mass movements more than younger hunters⁶; this pattern may point to fewer large-scale Dipterocarp mast fruiting events accompanied by bearded pig herding behavior^{43,44}. Additionally, in contemporary Malaysian Borneo, oil palm plantations provide year-round food subsidies to bearded pigs in many areas^{6,31}; for example, in one mixed landscape, bearded pig tracks were found in 80% of oil palm transects adjacent to forest²³. Therefore, the relationship between high bearded pig densities and hunting deserves further study, and could hold important implications for context-specific hunting management.

The outbreak of African Swine Fever (ASF) has led to the collapse of bearded pig populations across Sabah, and is a threat to populations in Sarawak²⁷. ASF case fatality rates of 47.7 to 100% have been recorded in wild and domestic pigs^{45,46}. Our site-specific findings—from data collected prior to the ASF outbreak—therefore provide a critical baseline of bearded pig occupancy in a number of areas within Malaysian Borneo. At the time of publication, bearded pig occupancies in a number of our sites are almost certainly much lower than the estimates reflected here, as a result of widespread local population collapses due to ASF²⁷. As populations recover, further research can compare future bearded pig occupancy relative to these baselines for specific areas as part of ongoing monitoring efforts for this IUCN-listed Vulnerable species²¹. For example, ongoing camera trap surveys across protected areas could help managers and decision makers assess the utility of hunting policies, movement control orders, law enforcement, and other regulatory mechanisms that could assist in bearded pig recovery. Protecting and expanding existing parks, wildlife reserves, and wildlife corridors may also provide connectivity and habitat for numerous bearded pig sub-populations, providing contexts for pig populations to safely recover.

Our results support context-specific management of bearded pigs in Sabah and Sarawak, Malaysian Borneo. Average estimated occupancy probability for bearded pigs across all sites was relatively high, at 0.70 (95% CI [0.57, 0.81]). However, spatial variation in predicted occupancy, which varied widely across field sites (0.35–0.92), suggests a range of management needs for bearded pig populations, which are known to have widely varying movement patterns and population growth rates that correspond to different population states⁴³. Bearded pig natural history fits many characteristics of a generalist species—e.g., dietary flexibility, broad habitat use, and high dispersal ability^{25,31}, and indeed our results showed high estimated occupancy probabilities in primary, secondary, protected, unprotected, hill, montane, and lowland forests in our study. However, the species still seems to require forest cover for safety, thermoregulation, and nesting^{23,27,47}. Widespread habitat destruction in recent decades has led to losses of large portions of its range and habitat in Borneo as well as in Peninsular Malaysia and Sumatra²⁸. As such, management strategies that preserve and protect contiguous forest areas are of critical long-term importance.

Our results show a significant, negative relationship between bearded pig occupancy and distance to water. This finding suggests the importance of proximity to water for high bearded pig occupancies. Our data do not allow us to conclude which aspect of proximity to water is particularly important for bearded pig populations, but there are several potential hypotheses. One possibility is that nearby water availability provides ready access to thermoregulation, as bearded pigs need to wallow regularly to cool themselves in warm tropical conditions²⁷. Another hypothesis is that *Ficus* sp. (fig) trees are more abundant or of greater diversity in riparian areas in our study area, providing a steady food source to sustain pig populations. Figs are thought to be a key food resource for bearded pigs during inter-mast intervals between Dipterocarp fruit pulses⁴⁸. Additionally, some *Ficus* species are particularly prominent in riparian areas in Southeast Asia^{49,50}, suggesting that this may hold true for our study areas. Management policies could consider protecting areas with Dipterocarps, *Ficus* sp. trees, *Fagaceae* sp. (oak) trees, and other food sources for bearded pigs, thereby providing variation in fruiting cycles that can sustain bearded pigs through lean periods^{43,48}. Large protected areas with abundant Dipterocarps may also provide one of the last contexts for conserving the unique migratory ecology of bearded pigs, which are thought, historically, to have traveled in very large herds for hundreds of kilometers tracking supraannual mast fruiting bounties⁴⁴. Large tracts of protected forest in Borneo and Sumatra are likely the only places remaining with sufficiently high masting activity, intact migration corridors, low hunting risk, large bearded pig populations, and reduced influence of oil palm fruit subsidies – together potentially establishing conditions for long-range bearded pig nomadic movements. In Borneo, continued tri-lateral cooperation between the governments of Brunei, Malaysia, and Indonesia through the Heart of Borneo initiative will be essential to protect large intact forest amidst infrastructure development, logging, mining, and oil palm expansion^{51,52}.

Finally, our results provide quantitative support for the potential sustainability of Indigenous pig hunting practices in Malaysian Borneo. Our results indicate that in both high and low hunting accessibility areas, there may be pathways for sustainable bearded pig hunting. The predicted positive relationship, based on our model results, between pig occupancy and Indigenous pig-hunting group in low accessibility areas suggests that there likely continue to be pathways for sustainable Indigenous bearded pig hunting in rural and remote areas. In low accessibility areas, Indigenous bearded pig hunting may be compatible with goals of biocultural conservation, such as provision of dietary and cultural benefits to KDM and Iban communities and conservation of bearded pig populations^{6,16}. As such, our study lends support to

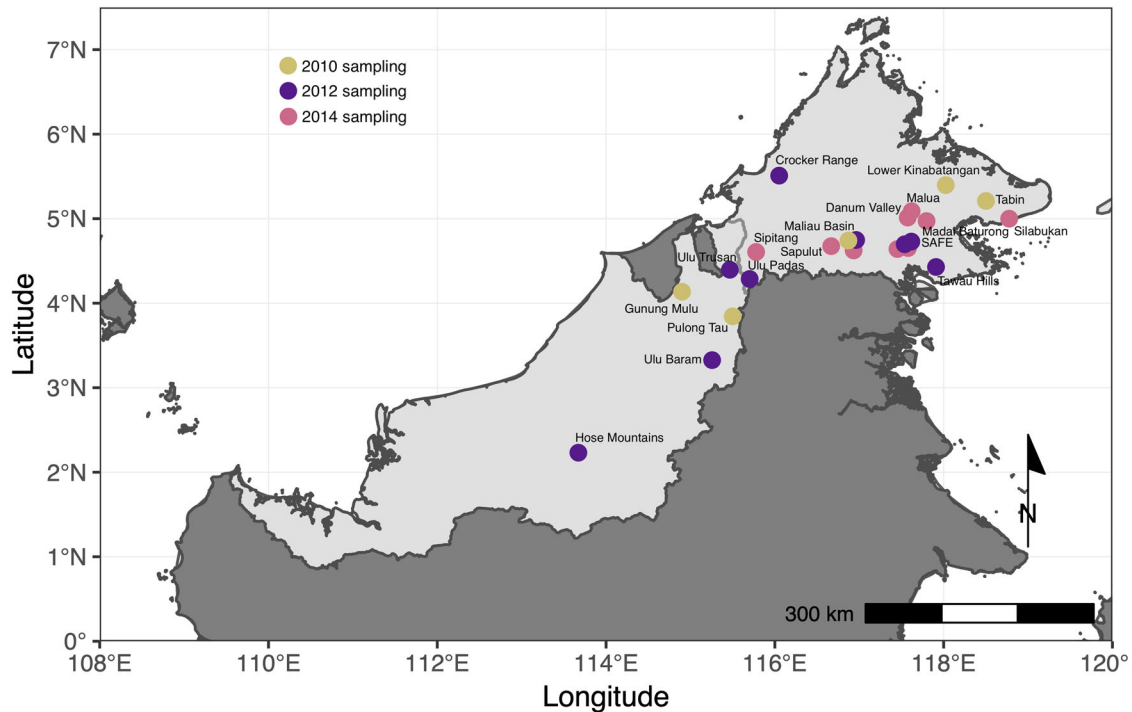


Fig. 3 Map of study area. Location of wildlife camera surveys conducted in 2010, 2012, and 2014 across Sabah and Sarawak, Malaysian Borneo. Labels show the names of the 18 sites, which are marked with dots, color-coded by year of the survey. For two sites, multiple locations within the site and multiple years of surveying are shown by clusters of dots.

customary Indigenous pig hunting rights, which have been compatible with sustainable bearded pig populations for thousands of years¹⁹. In high accessibility areas, the predicted positive association between pig occupancy and medium and low levels of pig-hunting group may suggest the need for adaptive, context-specific management that incorporates a certain threshold of hunting as a valid land use⁵³. In particular, the population density of a specific area and the level of hunting pressure in that area may be important considerations for management¹⁰. Critically, hunting thresholds and other management techniques should be determined collaboratively by local Indigenous and state leaders in ways that are sensitive to long-standing Indigenous hunting practices, local cultural and dietary needs⁶, area-specific ecological and management considerations, and bearded pig population trends. Our finding tracks with other studies highlighting opportunities for integration of Indigenous harvesting practices and sustainable management of game species^{54–56}.

After bearded pig populations recover to pre-ASF levels, we recommend preserving Indigenous pig hunting rights in specific areas while also ensuring long-term bearded pig population stability in protected areas. Prior to the ASF outbreak, bearded pig hunting was legal and common in both Sabah and Sarawak outside of protected areas and, in the case of Sabah, with a hunting license^{16,57–59}. Our results suggest that in low accessibility areas, high pig occupancies may be compatible with greater local participation in Indigenous hunting. In high accessibility areas, high pig occupancies may be compatible with moderate local participation in Indigenous hunting. In particular, forest-oil palm mixed landscapes, which are generally in high accessibility areas^{10,29}, are known to support high levels of bearded pig utilization^{23,31}. Regulated hunting in and around industrial and small-scale oil palm plantations could provide pest control benefits in plantations while also offering meat provision and cultural benefits for KDM and Iban hunters^{6,16}. Additionally, limiting or eliminating the sale of wild meat could help preserve Indigenous hunting for subsistence and cultural purposes while

also reducing unsustainable hunting pressure on bearded pig populations. Balancing pig populations and hunting is likely possible, given relatively high pig occupancy estimates across most of our study sites and high bearded pig reproductive capacity²⁵. However, further research on cultural practices and values, Indigenous hunting practices (in collaboration with Indigenous groups), pig densities, up-to-date records of hunting rates, and ongoing monitoring of pig populations are needed before specific regulations could be most accurately developed by Indigenous and state leaders.

Nuanced solutions will be critical so that Indigenous communities in Sabah and Sarawak can continue to sustainably hunt bearded pig populations, as they have for millennia^{19,22}. Critically, policies should allow for the flourishing of Indigenous stewardship practices, which have been connected to local conservation ethics⁶. For integrated biocultural conservation goals, it is critical that KDM and Iban groups are free to preserve the cultural and dietary benefits of bearded pig hunting, while also limiting hunting to sustainable levels for bearded pig population recovery and stability⁶. Our results highlight the tensions and opportunities of these twin goals.

METHODS

Study region and data collection

We collated bearded pig detections and non-detections from 18 camera trap surveys conducted in 2010, 2012, or 2014 across the Malaysian Bornean states of Sabah and Sarawak (Fig. 3). We followed institutional guidelines for research and obtained local research permissions from the Economic Planning Unit - Malaysia, Forest Department Sarawak, Sabah Biodiversity Centre, Sabah Forestry Department, Sarawak Biodiversity Centre, and Sarawak Forestry Corporation (permit numbers listed in Acknowledgements).

From these surveys, we integrated data from a total of 295 camera trap locations across 18 sites, comprising 10,462 bearded pig detections across 25,755 trap days. Camera surveys were

Table 3. Social and ecological covariates included in occupancy models.

Model covariate	Hypothesized relationship with occupancy	Covariate type
Hunting accessibility	—	social
KDM or Iban Indigenous group	—	social
Hunting accessibility ^a Indigenous grp. ¹	—	social
Distance to water (m)	—	ecological
Distance to forest edge (m)	+	ecological
Protected area status	+	ecological
Elevation (m)	+	ecological
Slope (deg)	—	ecological
Tree cover (%)	+	ecological

KDM is a locally-used abbreviation for the Kadazandusun-Murut Indigenous group.

¹ The ^arepresents an interaction effect. An interaction effect occurs when the level of one covariate influences the effect of another covariate on the dependent variable, which in this case is pig occupancy.

designed to target multiple mammal species and were therefore suitable for detecting bearded pigs, one of the most common mammals in many camera surveys in our study area^{60,61}. We spatially filtered camera locations to ensure at least 1 km between locations. For studies using paired cameras at each sampling location, we applied a random number generator to randomly select one camera from the pair. Camera trap surveys were carried out within lowland, hill, and montane primary forests (within protected areas) and previously logged lowland, hill, and montane secondary forests (including both protected and non-protected areas)⁶². Landscape accessibility across the study area varied considerably; our survey data included low and high accessibility areas¹⁰. Within arrays, cameras were active for varying lengths of time (Supplementary Table 1).

Ecological covariates

We chose covariates that we hypothesized to be strong predictors of bearded pig occupancy (Table 3). Ecological covariates (extracted from Earth Engine Data Catalog) included in analyses were distance to water⁶³, distance to forest edge⁶⁴, protected area status⁶⁵, elevation⁶⁶, slope⁶⁶, and tree cover⁶⁷ (Table 3, Supplementary Table 2). To match ecological variables with the camera trap data, we either used the closest year of ecological data or an average of multiple years. We removed highly correlated continuous covariates until Pearson's correlation coefficients among all pairs were less than |0.6|^{68,69}. To allow for ready comparison among covariate coefficients, we standardized all ecological covariates, except for protected area status (which is a factor).

Social covariates

We chose social variables that we hypothesized to influence bearded pig distributions (Table 3). The social covariates included in the models were: pig-hunting group (proportion of the district population composed of the predominant Indigenous pig-hunting group), hunting accessibility, and their interacting effects (Table 3, Supplementary Table 2). For the pig-hunting group covariate, we used published census data to calculate the proportion of the district population composed of the KDM peoples in Sabah and the Iban peoples in Sarawak^{6,14,18}.

Our study was not set up to explore hunting pressure directly, e.g. through separate covariates for raw numbers of total hunters per district and physical accessibility of the landscape. Instead, we used a published metric—which we refer to as “hunting accessibility”—that shows landscape accessibility adjusted for coarse estimates of plausible hunter density¹⁰. A higher metric score indicates higher hunting accessibility, and vice versa¹⁰. Despite measures of physical accessibility incorporated into the hunting accessibility metric, the metric was not highly correlated with any of our ecological covariates at a level above |0.4|⁶⁸. While this metric also accounts for the relative human population in a given area¹⁰, it is unable to capture cultural influences within the local populations engaging in hunting in that area, which is influenced by ethnicity and religion⁶. Alongside hunting accessibility, we included the covariate “pig-hunting group” (see above), thereby incorporating Indigenous, Christian pig-hunting practices into our models. We also included an interaction term for pig-hunting group and hunting accessibility, which tests whether the level of one of these covariates influences the impact of the other on pig occupancy. As with ecological covariates, we standardized social covariates to allow for ready comparison of coefficients.

Detection covariates

We used percent of non-tree vegetation cover⁶⁷ and effort as our predictors for detection.

Non-tree vegetation cover can block a pig from view and thereby inhibit the ability of a given camera to detect a passing pig. Including effort, using the package ‘unmarked’⁷⁰, as a detection covariate in occupancy models allowed us to correct for variable sampling effort, per trap and occasion window. As with ecological and social covariates, we standardized detection covariates to allow for ready comparison of coefficients.

Occupancy modeling approach

We fitted one single-season occupancy model for all the data from 2010, 2012, and 2014. However, given the long-distance movements for which the bearded pig is known^{24,25,44}, detections of bearded pigs cannot be considered independent and their populations cannot be considered closed⁷¹. Therefore, model-estimated occupancy results for species in this situation should be interpreted as probability of site use rather than true occupancy^{72,73}.

We ran models using the packages ‘unmarked’⁷⁰ and ‘camtrapR’⁷⁴ in R version 3.6.0⁶⁹. We used a seven-day sampling occasion window, corrected for sampling effort per trap and per occasion within the ‘camtrapR’ package⁷⁴. We then used the ‘dredge’ function⁷⁵ in R version 3.6.0⁶⁹ to identify top models according to Akaike's Information Criterion values, adjusted for small sample sizes (AICc). Models within <2 ΔAICc of the top model were considered to be competing models⁷⁶. We model-averaged competing models. We used the function ‘confint()’ to calculate 95% confidence intervals for coefficients⁶⁹. To visualize the interaction between pig-hunting group and hunting accessibility, we created an interaction plot prediction (repeated 267 times) using packages ‘ggplot2’ and ‘AICcmodavg’^{77,78}.

DATA AVAILABILITY

The census data and environmental variable data used in this study are publicly available (for links, see Supplementary Table 2). Data sharing for the camera trap data is not applicable to this study, as no new camera data were collected for this study. Requests for camera data may be made to the authors of the original camera studies for which those data were collected.

Received: 21 January 2022; Accepted: 8 December 2022;
Published online: 17 February 2023

REFERENCES

- Kays, R. et al. Does hunting or hiking affect wildlife communities in protected areas? *J. Appl. Ecol.* **54**, 242–252 (2016).
- Heberlein, T. A. & Ericsson, G. Ties to the countryside: accounting for urbanites attitudes toward hunting, wolves, and wildlife. *Hum. Dimens. Wildl.* **10**, 213–227 (2006).
- Wong, J. Z., Etoh, S. & Sujang, A. B. Towards sustainable community-based fishery resources management: the tagal system of Sabah. *Malaysia. SEAFDEC* **7**, 18–23 (2009).
- Riley, E. P. The importance of human-macaque folklore for conservation in Lore Lindu National Park, Sulawesi, Indonesia. *Oryx* **44**, 235–240 (2010).
- Gaynor, K. M. et al. War and wildlife: linking armed conflict to conservation. *Front. Ecol. Environ.* **14**, 533–542 (2016).
- Kurz, D. et al. Transformation and endurance of Indigenous hunting: Kadazandusun-Murut bearded pig hunting practices amidst oil palm expansion and urbanization in Sabah, Malaysia. *People. Nat.* **3**, 1078–1092 (2021).
- Karanth, K. K., Nichols, J. D., Hines, J. E., Karanth, K. U. & Christensen, N. L. Patterns and determinants of mammal species occurrence in India. *J. Appl. Ecol.* **46**, 1189–1200 (2009).
- Bettigole, C. A., Donovan, T. M., Manning, R., Austin, J. & Long, R. Acceptability of residential development in a regional landscape: potential effects on wildlife occupancy patterns. *Biol. Conserv.* **169**, 401–409 (2014).
- Stahlecker, D. W., Wallace, Z. P., Mikesic, D. G. & Smith, C. S. Does Hopi religious harvest of eaglets affect golden eagle territory occupancy and reproduction on the Navajo Nation? *J. Raptor Res.* **51**, 305–318 (2017).
- Deith, M. C. M. & Brodie, J. F. Predicting defaunation: accurately mapping bushmeat hunting pressure over large areas. *Proc. Royal Soc. B.* <https://doi.org/10.1098/rspb.2019.2677> (2020).
- Lischka, S. A. et al. A conceptual model for the integration of social and ecological information to understand human-wildlife interactions. *Biol. Conserv.* **225**, 80–87 (2018).
- Guerrero, A. M. et al. Achieving the promise of integration in social-ecological research: a review and prospectus. *Ecol. Soc.* <https://doi.org/10.5751/ES-10232-230338> (2018).
- Behr, D. M., Ozgul, A. & Cozzi, G. Combining human acceptance and habitat suitability in a unified socio-ecological suitability model: a case study of the wolf in Switzerland. *J. Appl. Ecol.* **54**, 1919–1929 (2017).
- Bennett, E. L., Nyaoui, A. J. & Sompud, J. In *Hunting for Sustainability in Tropical Forests* (eds. Robinson, J. G. & Bennett, E. L.) 305–324 (Columbia University Press, 2000).
- Chin, C. Pig in the pot: comments on *Sus barbatus* in the hunting lifestyle of the Penan in Sarawak (Borneo). *Asian Wild Pig News.* **1**, 10–12 (2001).
- Yi, M. C. K. & Mohd-Azlan, J. Wildlife hunting and utilization in Ulu Baleh, Sarawak, Malaysian Borneo. *Ethnobiol. Lett.* **11**, 76–84 (2020).
- Janowski, M. Pigs and people in the Kelabit Highlands, Sarawak. *Indones. Malay World.* **42**, 88–112 (2014).
- Department of Statistics Malaysia. Taburan penduduk dan ciri-ciri asas demografi. <https://www.mycensus.gov.my/index.php/ms/produk-banci/penerbitan/banci-2010/664-taburan-penduduk-dan-ciri-ciri-asas-demografi-2010> (2011).
- Harrisson, T., Hooijer, D. A. & Medway, L. An extinct giant pangolin and associated mammals from Niah Cave, Sarawak. *Nature* **189**, 166 (1961).
- Yusof, N. M. Study of social interaction among students of Vision Schools in Malaysia. *Asian Ethn.* **13**, 47–73 (2012).
- Luskin, M. S., Ke, A., Linkie, M. & Meijaard, E. *Sus barbatus*. The IUCN Red List of Threatened Species: e.T41772A10559190. <https://www.iucnredlist.org/species/41772/123793370> (2017).
- Medway, L. Post-Pleistocene changes in the mammalian fauna of Borneo: archaeological evidence from the Niah caves. *Studies Speleology.* **1**, 33–37 (1964).
- Love, K. et al. Bearded pig (*Sus barbatus*) utilisation of a fragmented forest-oil palm landscape in Sabah, Malaysian Borneo. *Wildl. Res.* **44**, 603–612 (2018).
- Curran, L. M. & Leighton, M. Vertebrate responses to spatiotemporal variation in seed production of mast-fruiting Dipterocarpaceae. *Ecol. Monogr.* **70**, 101–128 (2000).
- Luskin, M. S. & Ke, A. In *Ecology, Conservation and Management of Wild Pigs and Peccaries* (eds. Melletti, M. & Meijaard, E.) 175–183 (Cambridge University Press, 2018).
- Granados, A., Bernard, H. & Brodie, J. F. The influence of logging on vertebrate responses to mast fruiting. *J. Anim. Ecol.* **88**, 892–902 (2019).
- Kurz, D. J., Malim, P. & Goossens, B. In *Wildlife Atlas of Sabah* (ed. Davies, G.) 123–132. (WWF – Malaysia, 2022).
- Ke, A. & Luskin, M. S. Integrating disparate occurrence reports to map data-poor species ranges and occupancy: a case study of the Vulnerable bearded pig *Sus barbatus*. *Oryx* **53**, 377–387 (2019).
- Gaveau, D. L. A. et al. Rapid conversions and avoided deforestation: examining four decades of industrial plantation expansion in Borneo. *Sci. Rep.* <https://doi.org/10.1038/srep32017> (2016).
- Luskin, M. S. et al. Cross-boundary subsidy cascades from oil palm degrade distant tropical forests. *Nat. Commun.* <https://doi.org/10.1038/s41467-017-01920-7> (2017).
- Davison, C. W., Chapman, P. M., Wearn, O. R., Bernard, H. & Ewers, R. M. Shifts in the demographics and behavior of bearded pigs (*Sus barbatus*) across a land-use gradient. *Biotropica* **51**, 938–948 (2019).
- Alberti, M. et al. Integrating humans into ecology: opportunities and challenges for studying urban ecosystems. *BioScience* **53**, 1169–1179 (2003).
- Kumar, N. et al. Habitat selection by an avian top predator in the tropical megacity of Delhi: human activities and socio-religious practices as prey-facilitating tools. *Urban Ecosyst.* **21**, 339–349 (2018).
- Weiss, D. J. et al. A global map of travel time to cities to assess inequalities in accessibility in 2015. *Nature* **553**, 333–336 (2018).
- Hudson, L. N. et al. The database of the PREDICTS (Projecting Responses of Ecological Diversity In Changing Terrestrial Systems) project. *Ecol. Evol.* **7**, 145–188 (2017).
- Van Houtan, K. S. Conservation as virtue: a scientific and social process for conservation ethics. *Conserv. Biol.* **20**, 1367–1372 (2006).
- Hunt, K. M. & Ditton, R. B. Freshwater fishing participation patterns of racial and ethnic groups in Texas. *N. Am. J. Fish. Manag.* **22**, 52–65 (2002).
- Brashares, J. S. et al. Wildlife decline and social conflict. *Science* **345**, 376–378 (2014).
- Bolton, J. M., M. R. C. S., L. R. C. P., D. T. M. & H., D. Obst. R. C. O. G. Food taboos among the Orang Asli in West Malaysia: a potential nutritional hazard. *Am. J. Clin. Nutr.* **25**, 789–799 (1972).
- Wadley, R. L., Colfer, C. J. P. & Hood, I. G. Hunting primates and managing forests: the case of Iban forest farmers in Indonesian Borneo. *Hum. Ecol.* **25**, 243–271 (1997).
- Golden, C. D. & Comaroff, J. Effects of social change on wildlife consumption taboos in northeastern Madagascar. *Ecol. Soc.* <https://doi.org/10.5751/ES-07589-200241> (2015).
- Pieroni, A. & Sökand, R. Ethnic and religious affiliations affect traditional wild plant foraging in Central Azerbaijan. *Genet. Resour. Crop Evol.* **66**, 1495–1513 (2019).
- Caldecott, J. O., Blouch, R. A. & Macdonald, A. A. In *Pigs, Peccaries and Hippos: Status Survey and Conservation Action Plan*. (ed. Oliver, W. L.) 136–145 (IUCN, 1993).
- Caldecott, J. & Caldecott, S. A horde of pork. *New Sci.* **110**, 32–35 (1985).
- Liu, J. et al. Prevalence of African Swine Fever in China, 2018–2019. *J. Med. Virol.* **92**, 1023–1034 (2020).
- Food and Agriculture Organization of the United Nations. Agriculture and Consumer Protection Department. ASF situation in Asia & Pacific update. http://www.fao.org/ag/againfo/programmes/en/empres/ASF/situation_update.html (2021).
- Luskin, M. S. & Potts, M. D. Microclimate and habitat heterogeneity through the oil palm lifecycle. *Basic Appl. Ecol.* **12**, 540–551 (2011).
- Wong, S. T., Servheen, C., Ambu, L. & Norhayati, A. Impacts of fruit production cycles on Malayan sun bears and bearded pigs in lowland tropical forest of Sabah, Malaysian Borneo. *J. Trop. Ecol.* **21**, 627–639 (2005).
- Corner, E. J. H. The complex of *Ficus deltoidea*; a recent invasion of the Sunda shelf. *Philos. Trans. R. Soc. B: Biol. Sci.* **256**, 281–317 (1969).
- Pothasin, P., Compton, S. G. & Wangpakapattanawong, P. Riparian *Ficus* tree communities: the distribution and abundance of riparian fig trees in Northern Thailand. *PLoS ONE.* <https://doi.org/10.1371/journal.pone.0108945> (2014).
- Declaration on the Heart of Borneo Initiative. Brunei Darussalam, Indonesia, and Malaysia. https://www.panda.org/discover/knowledge_hub/where_we_work/borneo_forests/about_borneo_forests/declaration/ (2007).
- Keong, C. Y. & Onuma, A. Transboundary ecological conservation, environmental value, and environmental sustainability: lessons from the Heart of Borneo. *Sustainability* <https://doi.org/10.3390/su13179727> (2021).
- Neumann, W. et al. Hunting as land use: understanding the spatial associations among hunting, agriculture, and forestry. *Ecol. Soc.* <https://doi.org/10.5751/ES-12882-270102> (2022).
- Shaffer, C. A. et al. Integrating ethnography and hunting sustainability modeling for primate conservation in an Indigenous reserve in Guyana. *Int. J. Primatol.* **39**, 945–968 (2018).
- Popp, J. N., Priadka, P. & Kozmik, C. The rise of moose co-management and integration of Indigenous knowledge. *Hum. Dimens. of Wildl.* **24**, 159–167 (2019).
- Breton-Honeyman, K. Beluga whale stewardship and collaborative research practices among Indigenous peoples in the Arctic. *Polar Res.* <https://doi.org/10.33265/polar.v40.5522> (2021).
- Wildlife Conservation Enactment 1997. No. 6 of 1997. State of Sabah. https://www.sabahlaw.com/WILDLIFE_ENACTMENT.pdf.
- Wild Life Protection Ordinance, 1998. Chapter 26. Laws of Sarawak. https://www.sarawakforestry.com/pdf/laws/wildlife_protection_ordinance98_chap26.pdf.

59. Wilting, A., Fischer, F., Bakar, S. A. & Linsenmair, K. E. Clouded leopards, the secretive top carnivore of South-East Asian rainforests: their distribution, status and conservation needs in Sabah, Malaysia. *BMC Ecol.* <https://doi.org/10.1186/1472-6785-6-16> (2006).
60. Bernard, H. et al. Camera-trapping survey of mammals in and around Imbak Canyon Conservation Area in Sabah, Malaysian Borneo. *Raffles Bull. Zool.* **61**, 861–870 (2013).
61. Mohd-Azlan, J., Yi, M. C. K., Lip, B. & Hon, J. Camera trapping of wildlife in the newly established Baleh National Park, Sarawak. *J. Sustain. Sci. Manag.* **14**, 38–51 (2019).
62. Miettinen, J., Shi, C. & Liew, S. C. 2015 Land cover map of Southeast Asia at 250 m spatial resolution. *Remote Sens. Lett.* **7**, 701–710 (2016).
63. Pekel, J.-F., Cottam, A., Gorelick, N. & Belward, A. S. High-resolution mapping of global surface water and its long-term changes. *Nature* **540**, 418–422 (2016).
64. Gaveau, D. L. A., Salim, M. & Arjasakusuma, S. Deforestation and industrial plantations development in Borneo. Center for International Forestry Research (CIFOR). <https://doi.org/10.17528/CIFOR/DATA.00049>.
65. UNEP-WCMC & IUCN. Protected planet: the world database on protected areas (WDPA). https://developers.google.com/earth-engine/datasets/catalog/WCMC_WDPA_current_polygons.
66. Farr, T. G. et al. The shuttle radar topography mission. *Rev. Geophys.* <https://doi.org/10.1029/2005RG000183> (2007).
67. Dimiceli, C. et al. MOD44B MODIS/Terra Vegetation Continuous Fields Yearly L3 Global 250m SIN Grid V006. *NASA EOSDIS Land Processes DAAC.* <https://doi.org/10.5067/MODIS/MOD44B.006> (2015).
68. Zuur, A., Ieno, E. N., Walker, N., Saveliev, A. A. & Smith, G. M. *Mixed effects models and extensions in ecology with R*. 574 (Springer, 2009).
69. R Development Core Team. R: A Language and Environment for Statistical Computing. <https://www.r-project.org/> (R Foundation for Statistical Computing, 2019).
70. Fiske, I. & Chandler, R. unmarked: an R package for fitting hierarchical models of wildlife occurrence and abundance. *J. Stat. Softw.* **43**, 1–23, (2011) <http://www.jstatsoft.org/v43/i10/>.
71. MacKenzie, D. I. et al. Estimating site occupancy rates when detection probabilities are less than one. *Ecology* **83**, 2248–2255 (2002).
72. Petracca, L. S. et al. Robust inference on large-scale species habitat use with interview data: the status of jaguars outside protected areas in Central America. *J. Appl. Ecol.* **55**, 723–734 (2018).
73. Gould, M. J., Gould, W. R., Cain, J. W. III. & Roemer, G. W. Validating the performance of occupancy models for estimating habitat use and predicting the distribution of highly-mobile species: a case study using the American black bear. *Biol. Conserv.* **234**, 28–36 (2019).
74. Niedballa, J., Sollmann, R., Courtiol, A. & Wilting, A. camtrapR: an R package for efficient camera trap data management. *Methods Ecol. Evol.* **7**, 1457–1462 (2016).
75. Bartoń, K. 2020. MuMIn: multi-model inference. R package version 1.43.17. <https://cran.r-project.org/web/packages/MuMIn/index.html>.
76. Cobox, M. E., Peterson, A. T., Barve, N. & Osorio-Olvera, L. kuenm: an R package for detailed development of ecological niche models using Maxent. *PeerJ.* <https://doi.org/10.7717/peerj.6281> (2019).
77. Wickham, H. & Chang, W. Package ‘ggplot2’. <https://cran.microsoft.com/snapshot/2015-01-06/web/packages/ggplot2/ggplot2.pdf> (2014).
78. Mazerolle, M. J. Model selection and multimodel inference using the AICcmodavg package. <https://mirror.marwan.ma/cran/web/packages/AICcmodavg/vignettes/AICcmodavg.pdf> (2020).

ACKNOWLEDGEMENTS

Thank you to Owen Bidder, Lindsey Rich, Claire Kremen, Jimmy McGuire, Evelyn St-Louis, the Brashares Lab, Justin Brashares' Writing Seminar, the UC Berkeley Conservation Community, and the WildCo Lab at UBC for support at various stages of the project. Thank you also to the Economic Planning Unit - Malaysia, Forest Department Sarawak, the Maliau Basin Management Committee, the Sabah Biodiversity Centre, the Sabah Forestry Department, the Sarawak Biodiversity Centre, and the Sarawak Forestry Corporation for permissions for field research and data collection (permit #: 12/2015, 159/2015, (233)JHS/NCCD/600-7/2/107/Jld.2, WL010/2016, 40/200/19/2656, (91)JHS/NCCD/600-7/2/107/Jld.2, JKM/ MBS.1000-2/2 JLD.3 (18), JKM/MBS.1000-2/2 JLD.3 (34), JKM/MBS.1000-2/2 JLD.9 (59), JKM/MBS.1000-2/3 (84), JKM/MBS.1000-2/12(156), MBMC/2010/15, NCCD.907.4.4(JLD11)-11, P2585(1)(1-12)/16, SFC.810-4/6/1, WL07/2021, WL44/2019). Funding for this work was provided by Big Cat Rescue, a Department/Government of Sarawak Project: Budget P230000

(Federal) and 350001 (State) grant, the Faculty Research Committee Completion Grant at Trinity College, the Faculty of Resource Science and Technology at Universiti Malaysia Sarawak, Forest Department Sarawak, the Fulbright U.S. Student Program and the Malaysian-American Commission on Educational Exchange (MACEE), the Fundamental Research Grant Scheme (FRGS/ 1/2020/WAB11/UNIMAS/02/3), the Hannah M. and Frank Schwabacher Memorial Scholarship Fund, a Harvey Fellowship from the Mustard Seed Foundation, the Houston Zoo, the Howard William Siggins Fellowship, Idea Wild, Institute of Biodiversity and Environmental Conservation, the Institute for East Asian Studies Graduate Fellowship at UC Berkeley, Kementerian Pengajian Tinggi Malaysia, the Malaysian Palm Oil Council, the Mohamed bin Zayed Species Conservation Fund, the National Sciences and Engineering Research Council of Canada (NSERC), the National Science Foundation Graduate Research Fellowship, the Niche Research Grant Scheme (NRGS/1087/2013(01)), the Ocean Park Conservation Fund Hong Kong, the Philomathia Graduate Student Fellowship in the Environmental Sciences, the Research, Innovation and Enterprise Centre at Universiti Malaysia Sarawak, Sarawak Energy, the Sarawak Forestry Corporation, the Sime Darby Foundation, the Small Wild Cat Conservation Foundation, the S.J. Hall Fellowship, Ta Ann Holdings Bhd., the Thomas McKenna Meredith '48 Postdoctoral Fellowship in Environmental Science at Trinity College, the UK Natural Environment Research Council Human Modified Tropical Forest Programme, the UC Berkeley Rausser College of Natural Resources, Universiti Malaysia Sarawak, University of California Libraries, the University of Montana, Wilmar International, and the Woodland Park Zoo.

AUTHOR CONTRIBUTIONS

J.S.B. conceived the study. E.L.B. translated the abstract into Malay (Bahasa Malaysia). D.J.K., T.C., and J.S.B. designed the research approach. J.F.B., A.H., P.C.G., O.W., A.A., E.L.B., H.B., N.J.D., J.G.E.W., A.G., O.H., H.-Y.L., M.S.L., D.M., J.M.-A., J.R., B.S., M.S., and B.G. contributed to field work. S.H.S. led collation of ecological covariates and D.J.K. led collation of social covariates and camera data. M.C.M.D. and J.F.B. created the hunting accessibility covariate. T.C. led the analysis, and D.J.K., S.H.S., J.F.B., O.W., M.C.M.D., N.J.D., A.G., M.S.L., M.S., M.D.P., and J.S.B. contributed to the analysis. D.J.K. led writing, and all authors contributed to writing, review, and approval of the manuscript.

COMPETING INTERESTS

The authors declare no competing interests.

ADDITIONAL INFORMATION

Supplementary information The online version contains supplementary material available at <https://doi.org/10.1038/s44185-022-00008-w>.

Correspondence and requests for materials should be addressed to David J. Kurz.

Reprints and permission information is available at <http://www.nature.com/reprints>

Publisher's note Springer Nature remains neutral with regard to jurisdictional claims in published maps and institutional affiliations.



Open Access This article is licensed under a Creative Commons Attribution 4.0 International License, which permits use, sharing, adaptation, distribution and reproduction in any medium or format, as long as you give appropriate credit to the original author(s) and the source, provide a link to the Creative Commons license, and indicate if changes were made. The images or other third party material in this article are included in the article's Creative Commons license, unless indicated otherwise in a credit line to the material. If material is not included in the article's Creative Commons license and your intended use is not permitted by statutory regulation or exceeds the permitted use, you will need to obtain permission directly from the copyright holder. To view a copy of this license, visit <http://creativecommons.org/licenses/by/4.0/>.

© The Author(s) 2023