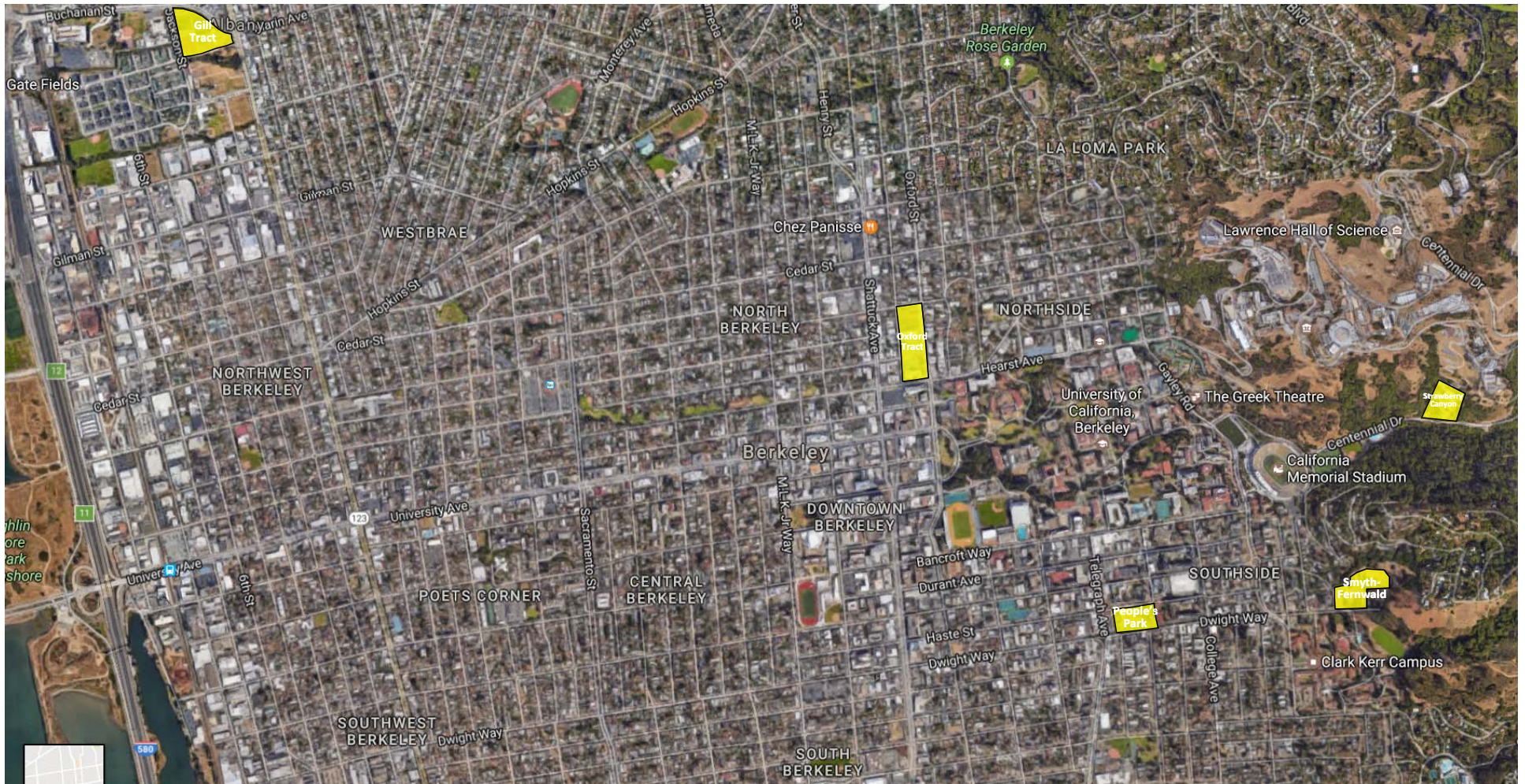
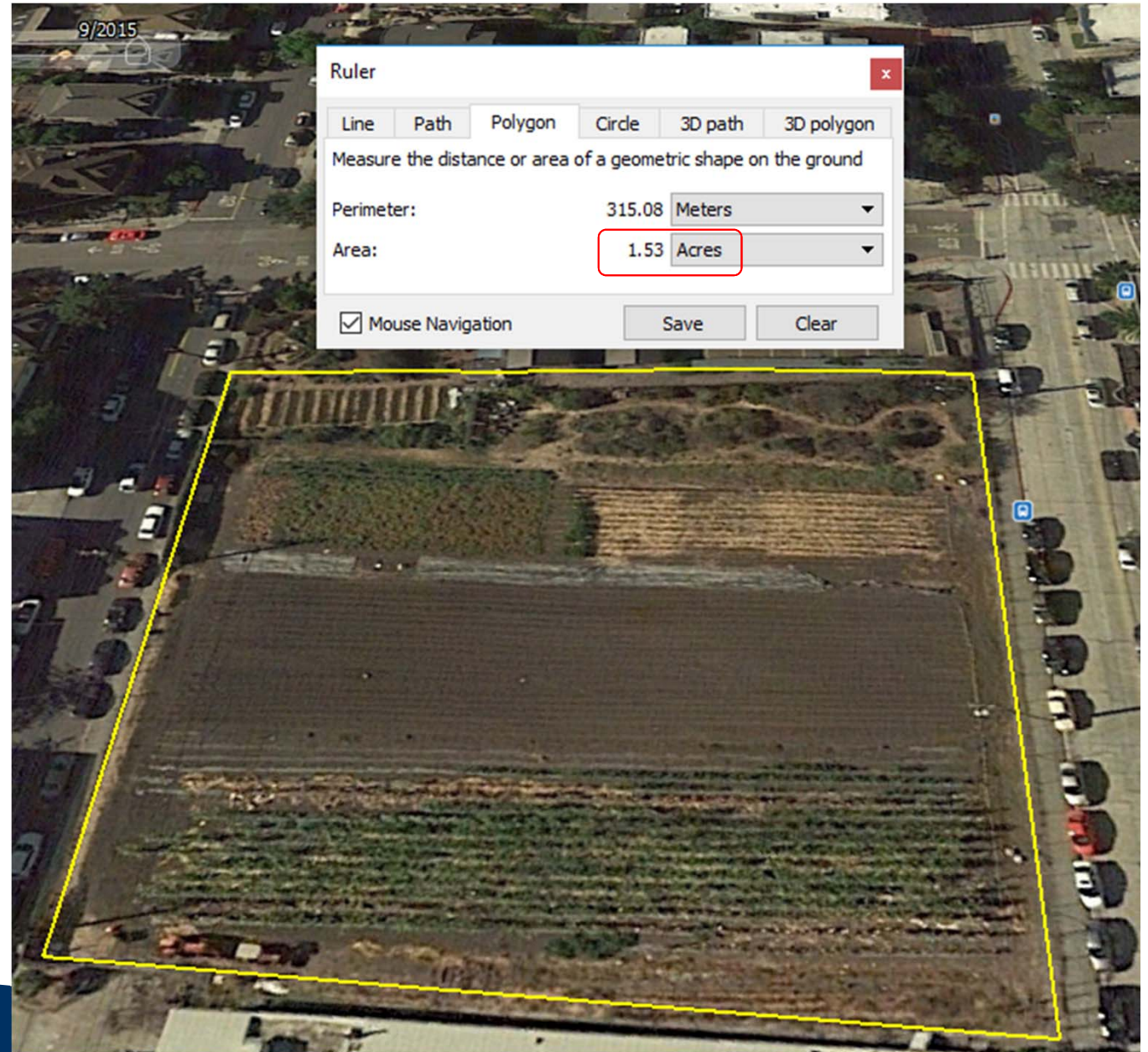


Map of Oxford Tract and Possible Alternative Sites

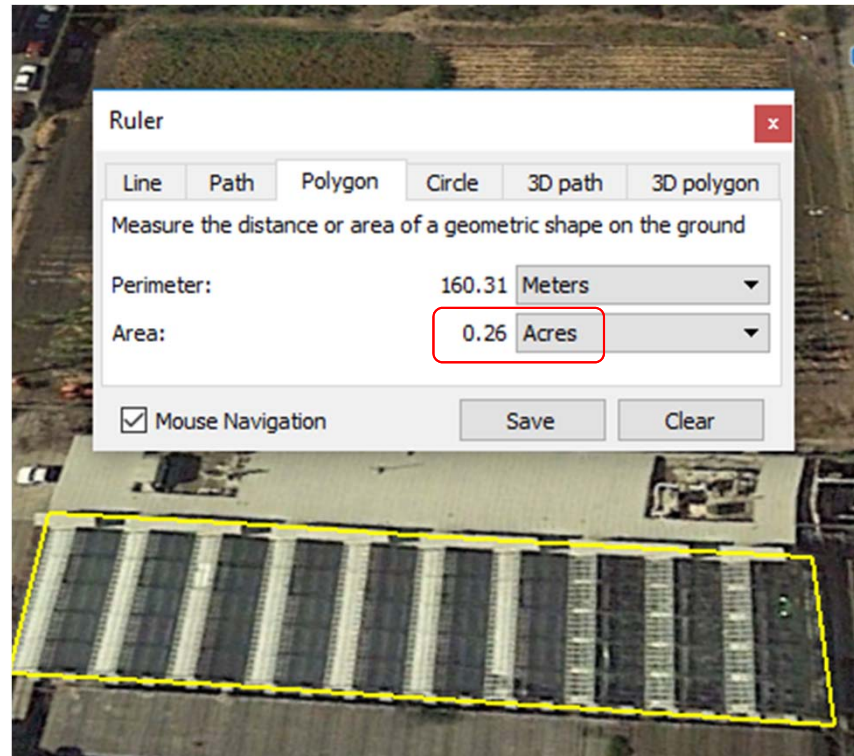


- Oxford Tract is 4.5 acres

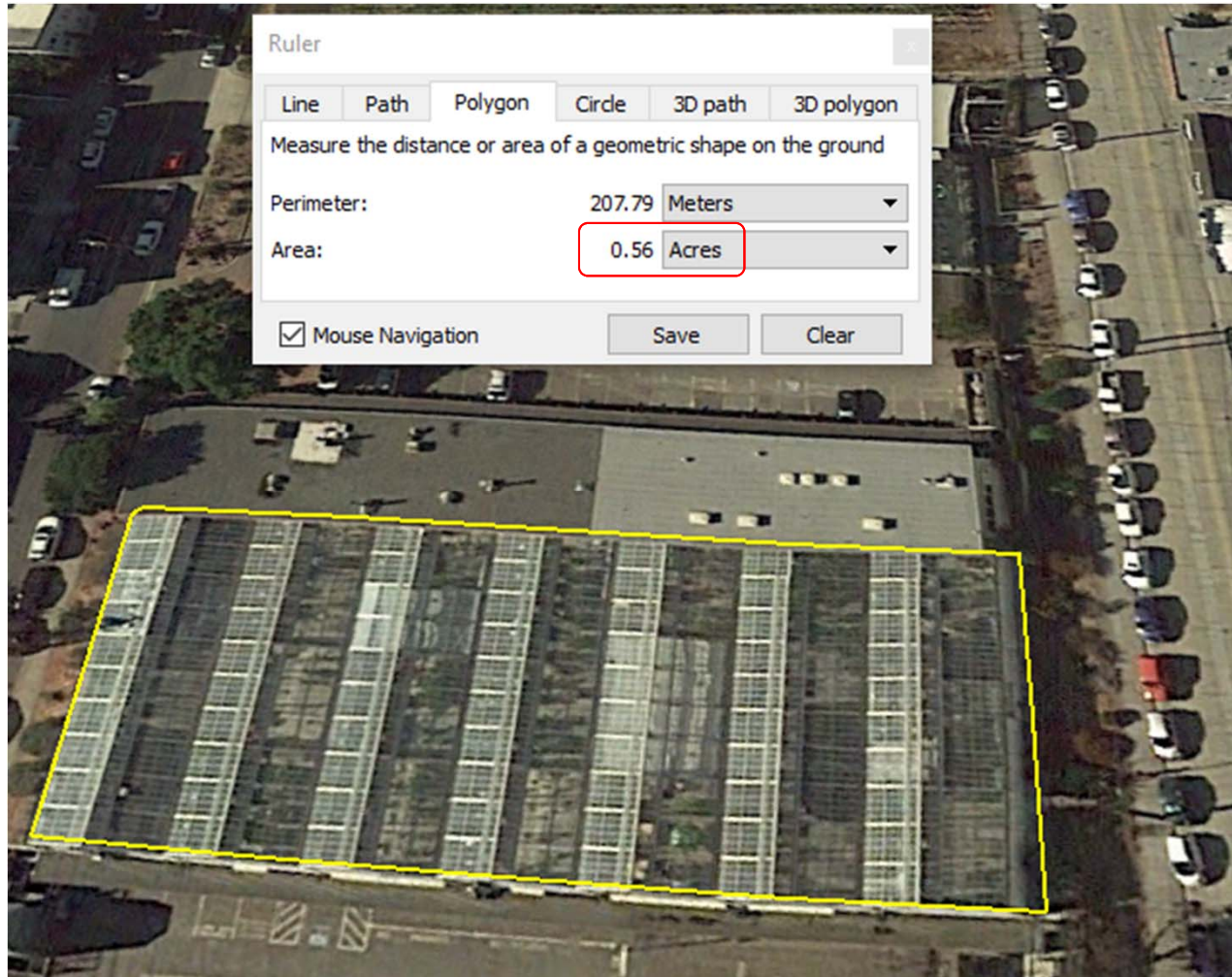
Oxford Tract: Research Field



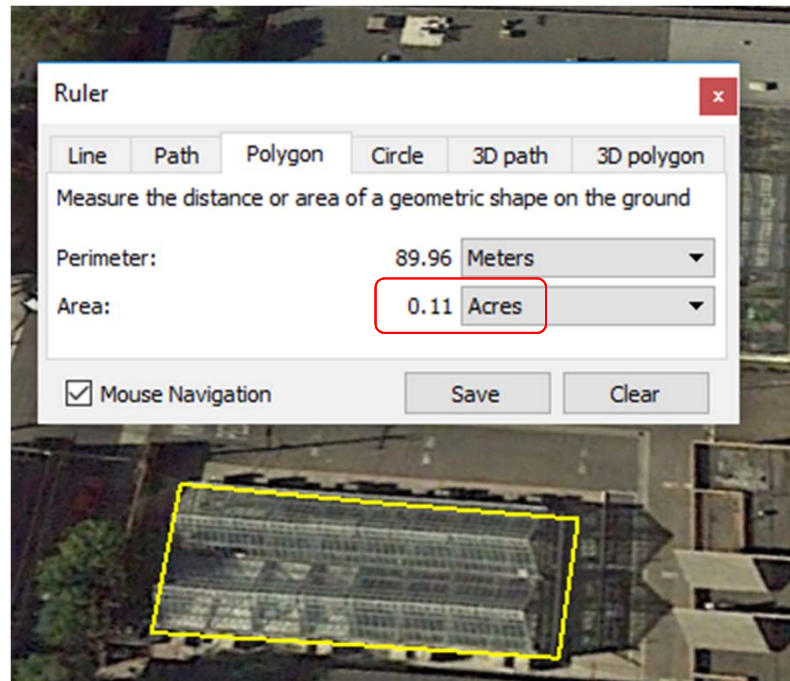
Oxford Tract: North Greenhouse



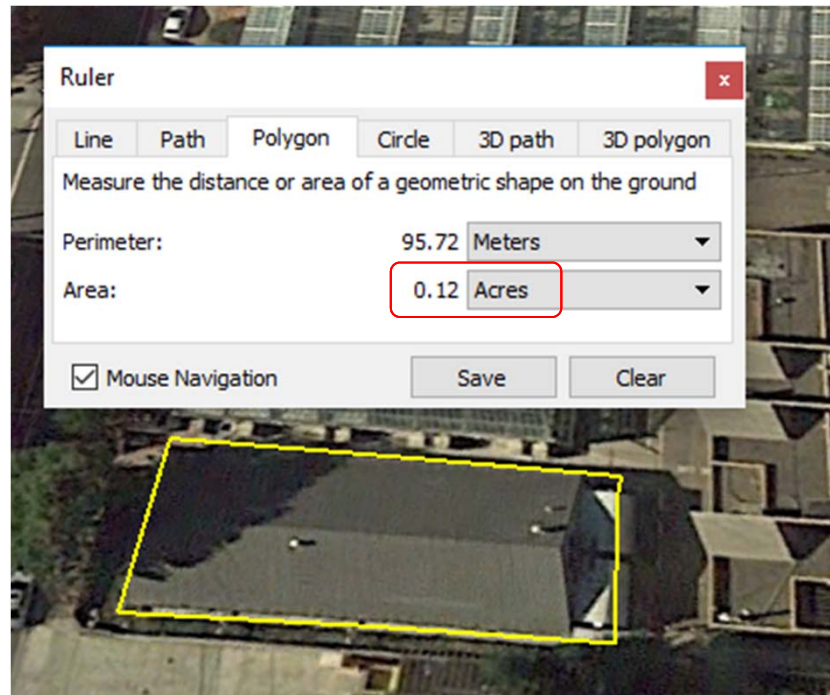
Oxford Tract: South Greenhouse



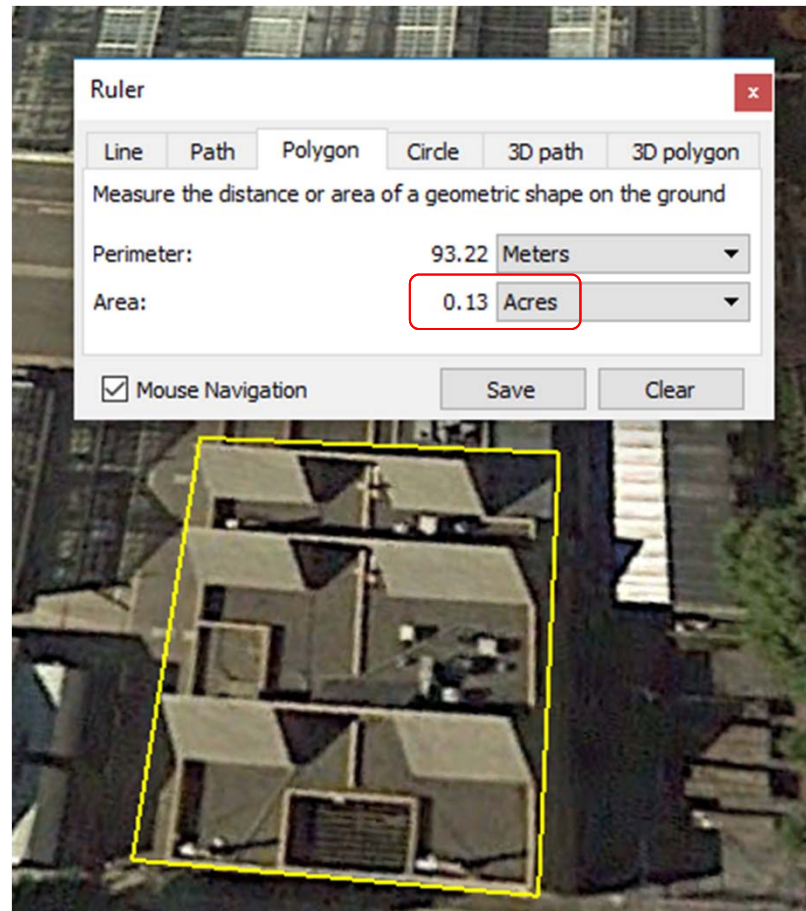
Oxford Tract: Insectary Greenhouse



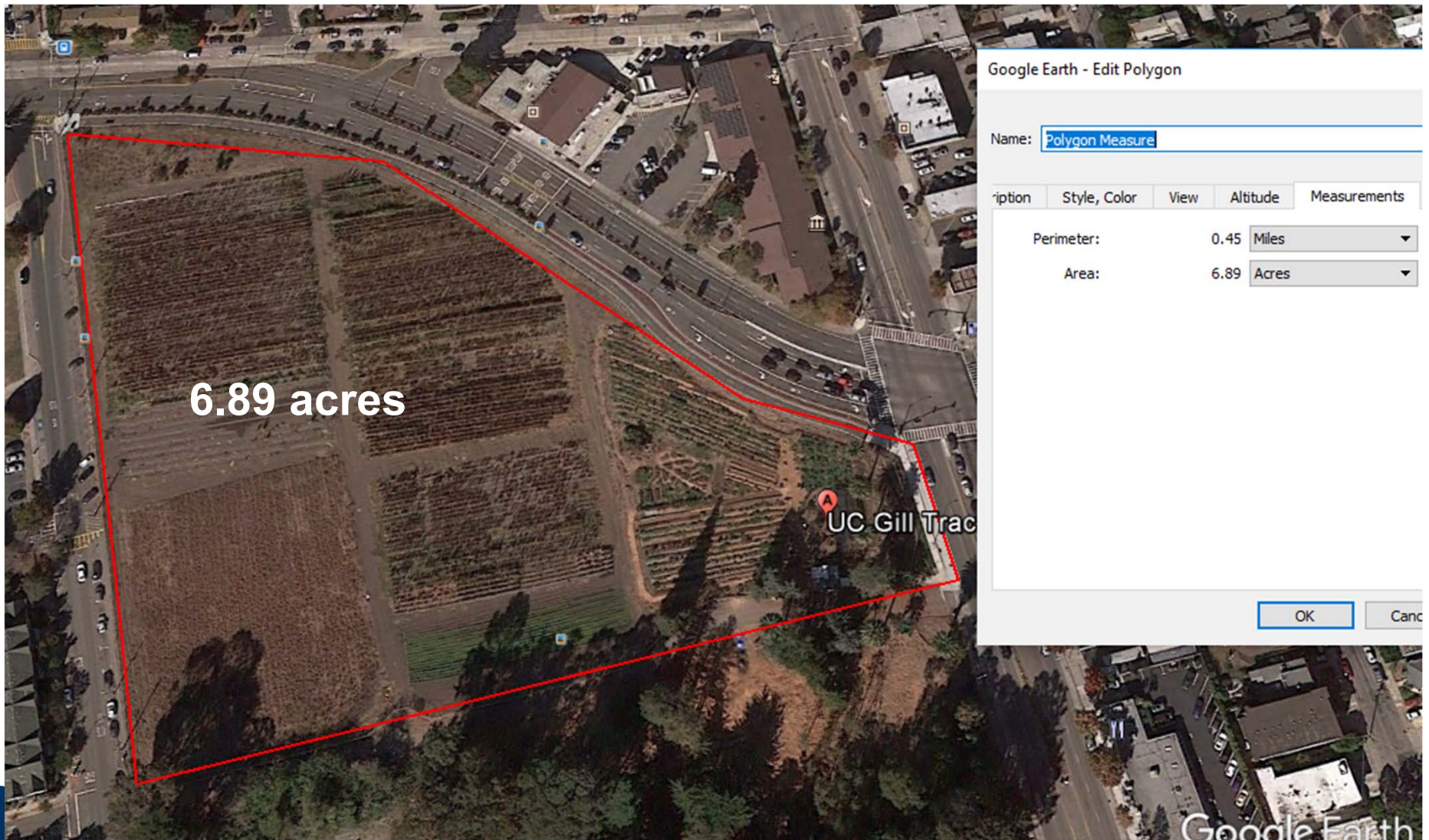
Oxford Tract: Insectary Building



Oxford Tract: Natural Resources Laboratory



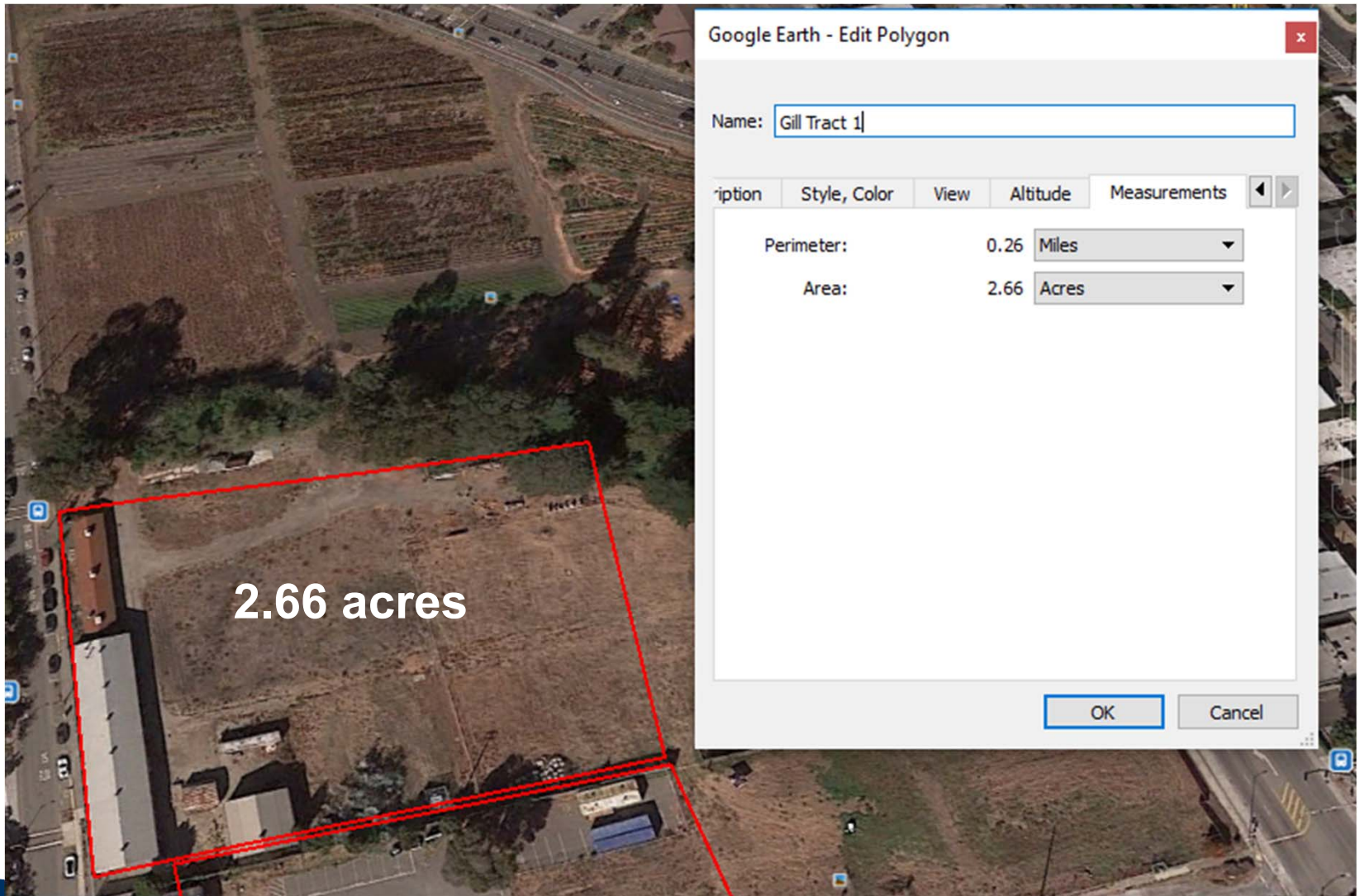
Gill Tract (Northern Portion)



Berkeley
UNIVERSITY OF CALIFORNIA

- ✓ Next to CNR programs
- ✓ Robust building & community engagement possibilities
- × Long distance from campus

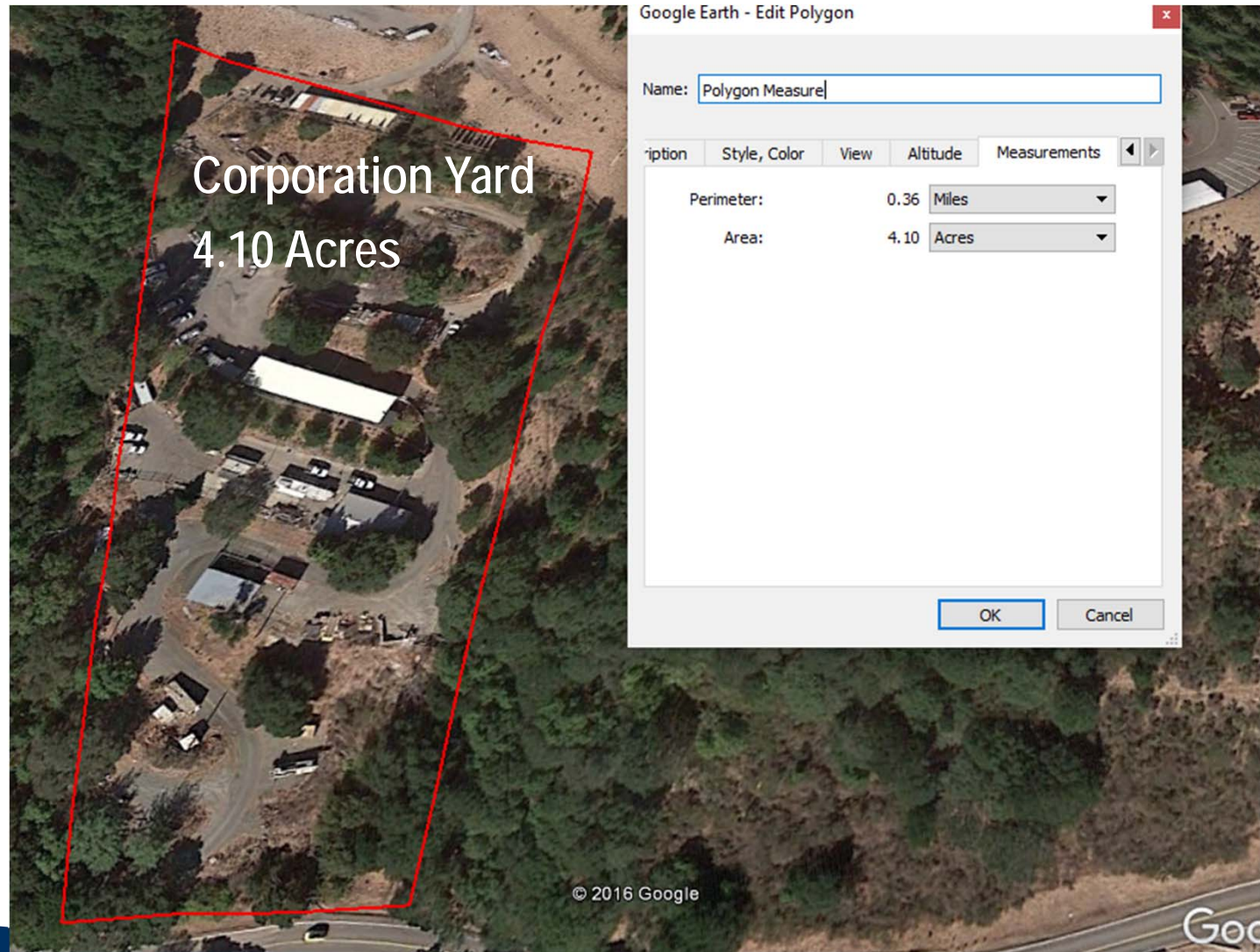
Gill Tract (Southern Portion)



Berkeley
UNIVERSITY OF CALIFORNIA

- ✓ Next to CNR programs
- ✓ Robust building & community engagement possibilities
- × Long distance from campus

Strawberry Canyon



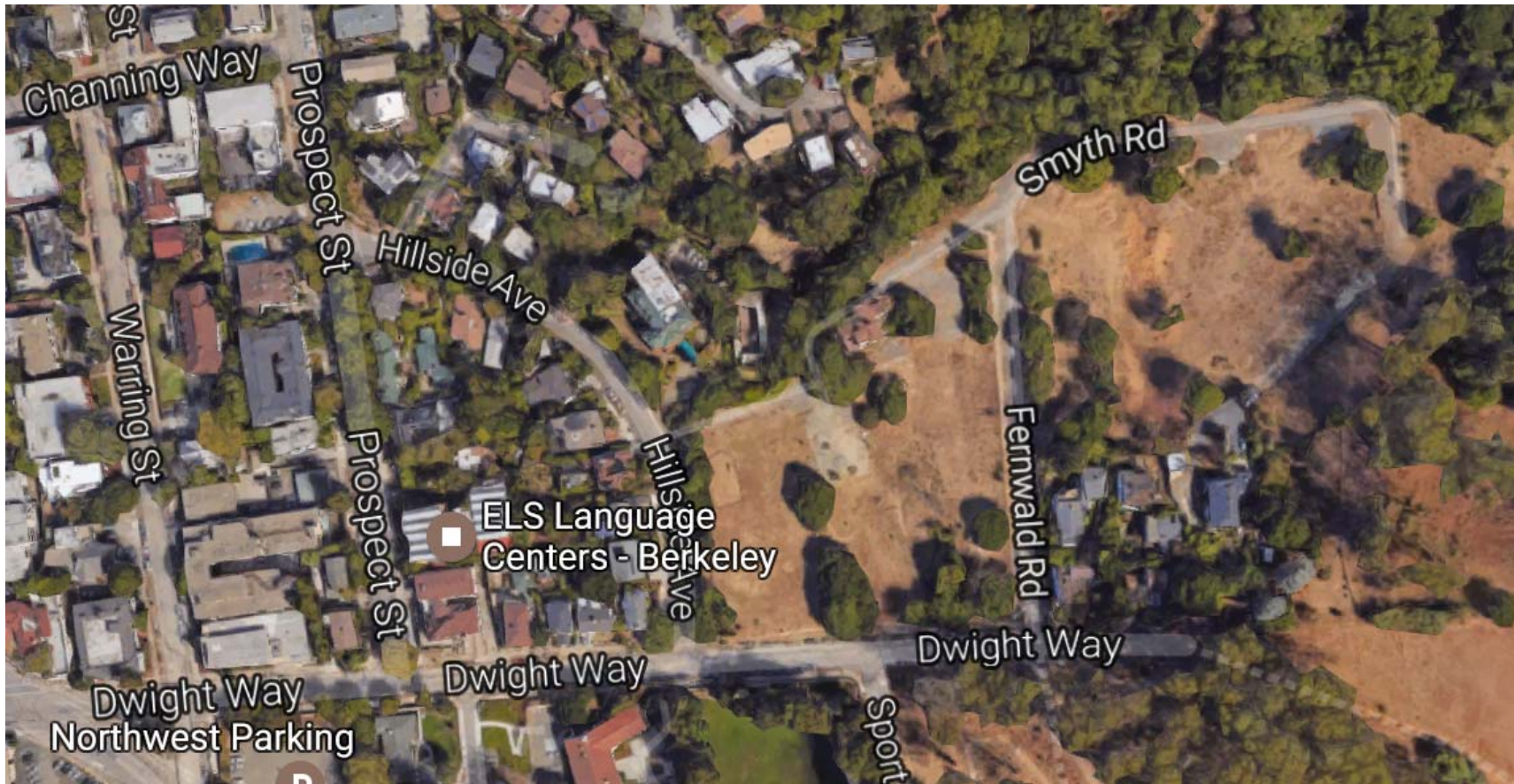
Could include
Strawberry
Canyon Center
(5,700 asf)

Berkeley
UNIVERSITY OF CALIFORNIA

- ✓ Adjacent to core campus
- ✓ Secure site
- × Building in SC could be a challenge

Smyth-Fernwald

- 9.25 acres



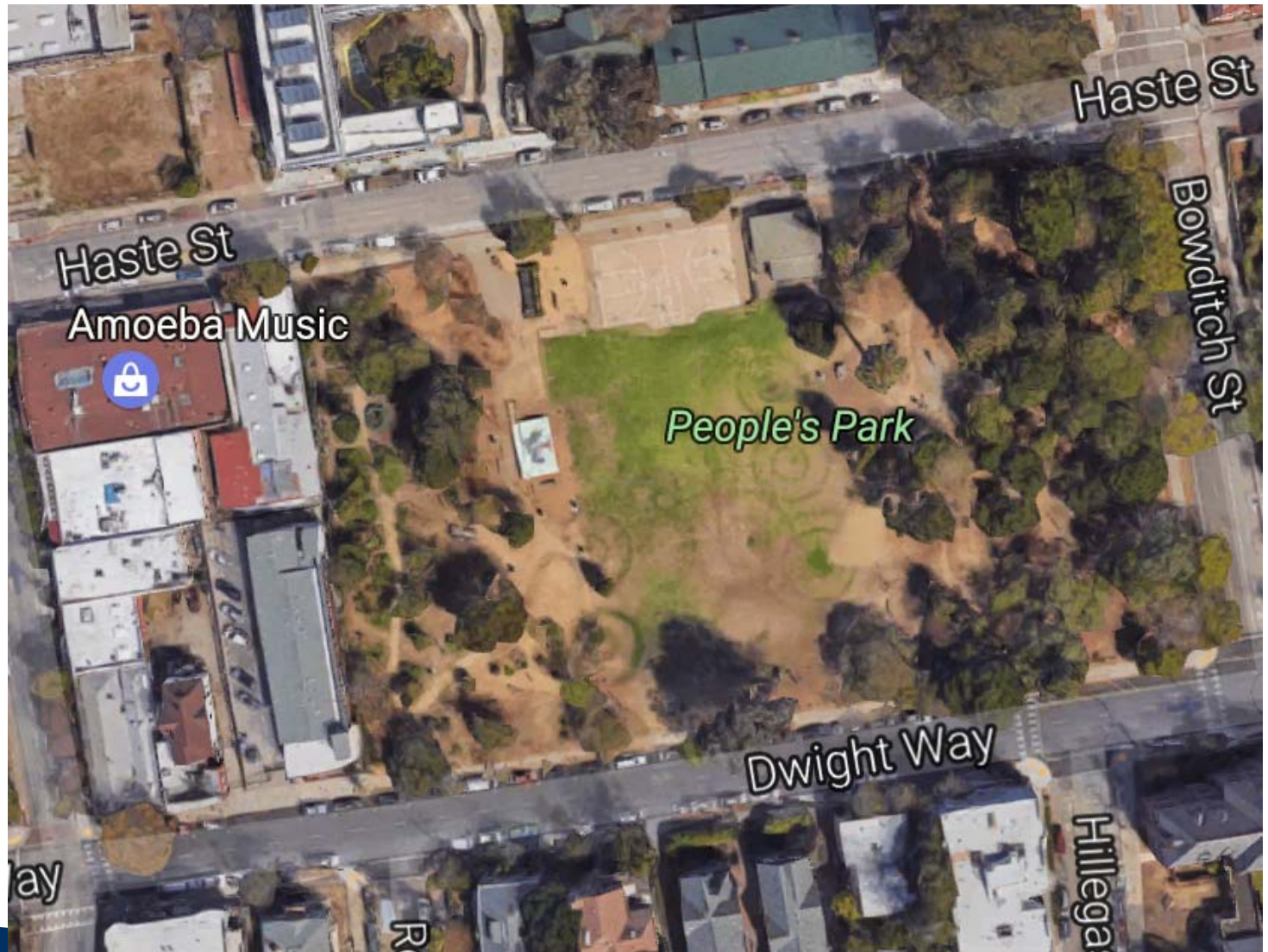
Could use Smyth House as
program space (4,612 asf)

Berkeley
UNIVERSITY OF CALIFORNIA

- ✓ Large area (incl. level areas)
- ✓ Close to core campus
- × Adjacent to Hayward fault

People's Park

- 2.25 acres



Berkeley
UNIVERSITY OF CALIFORNIA

- ✓ Improved usage
- ✓ Potential for public programmatic use
- × Historic politics; planned for student housing