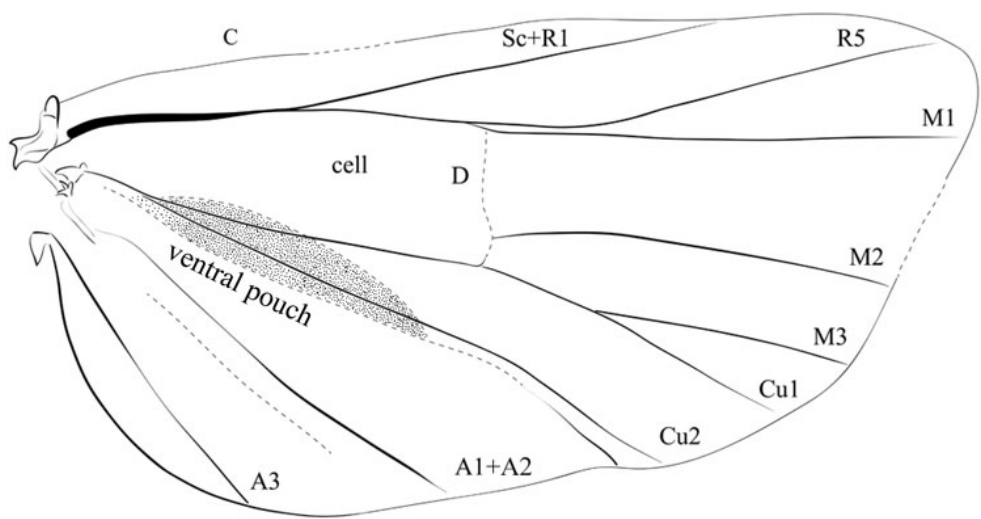
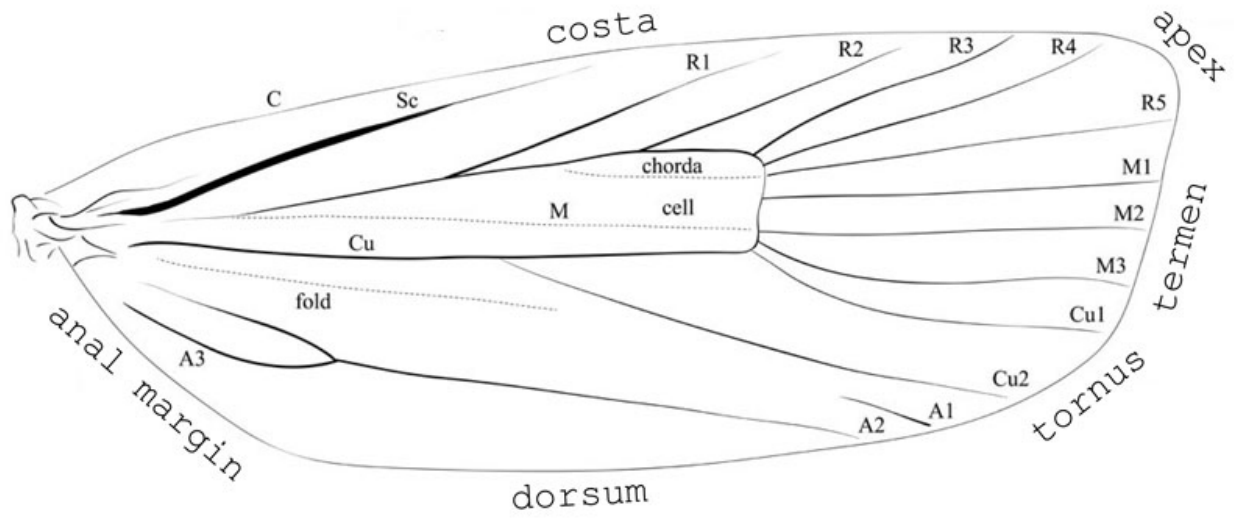


Figures 1-4. Eggs, larvae, parasitoids, and pupa of *Cydia plicata* (Walsingham). 1. Section of *Sophora chrysophylla* seedpod with arrows indicating a cluster of three eggs and a single egg. 2. Larva feeding inside *S. chrysophylla* seed. 3. Larvae of parasitoid *Euderus metallicus* (Ashmead 1901) feeding on *Cydia* larva. 4. Pupal exuvia partially protruding from *S. chrysophylla* seedpod.



Figures 5-8. Host plants of Hawaiian *Cydia*. 5. *Sophora chrysophylla* seedpods on Mauna Kea, Hawaii, arrow indicating silk plug made by *C. plicata* larva. 6. *S. chrysophylla* terminal twig at Kokee, Kauai, showing split from previous *C. makai* feeding. 7. *Acacia koa* at Kokee, Kauai, showing flowers and *Uromyces koeae* rust gall. 8. *Canavalia galeata* flowers, seedpods, and stems from Punaluu, Hawaii.



Figures 9. Wing venation of *Cydia parapteryx* (Meyrick). The pouch hangs below the wing opening along a thin slit on the upper surface of the wing along the path of the obscured CuP vein.



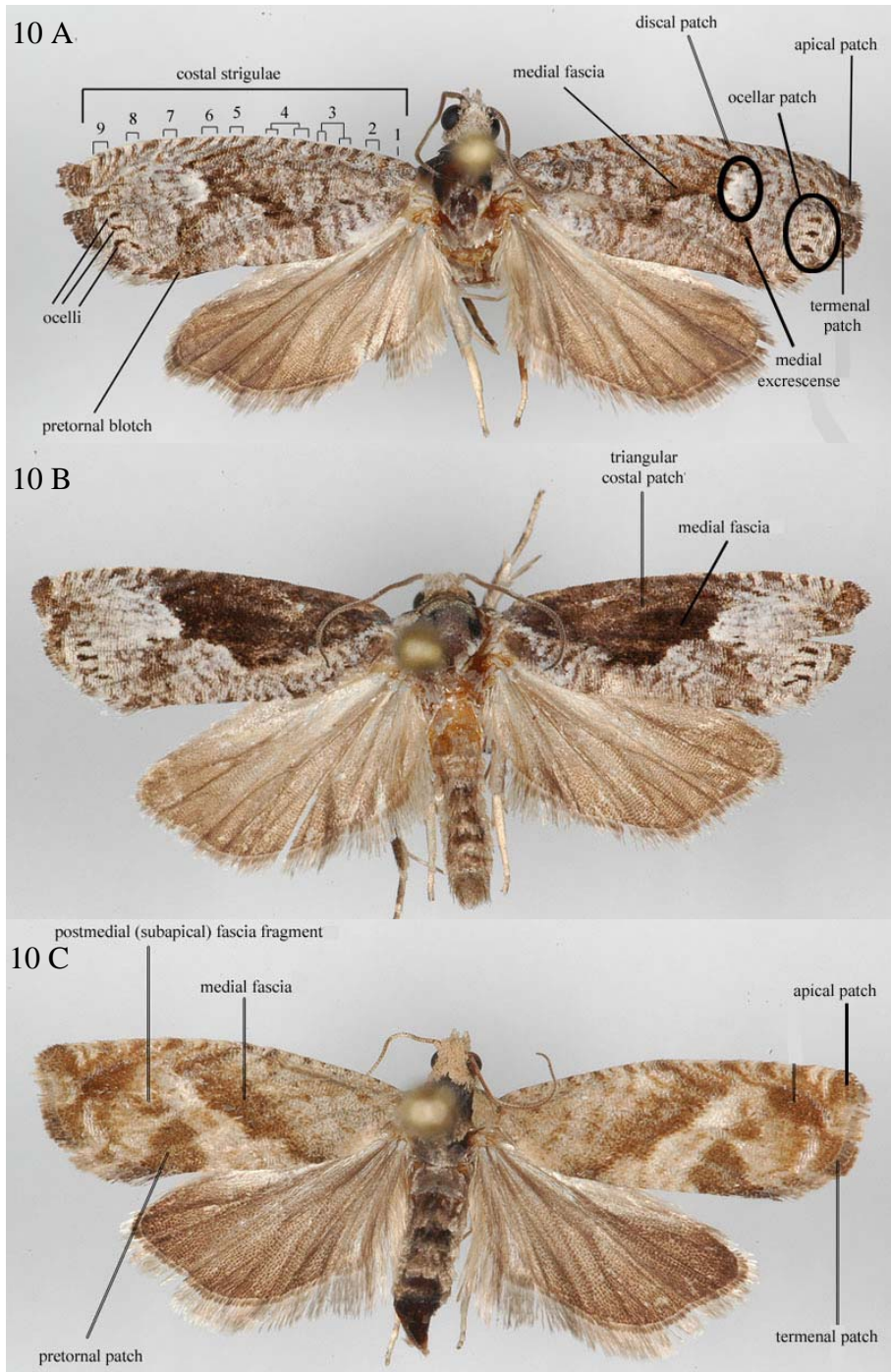


Figure 10. Hawaiian *Cydia* wing pattern elements. A and B. *C. koiiae* n.sp. Oboyski, *C. plicata* (Walsingham).

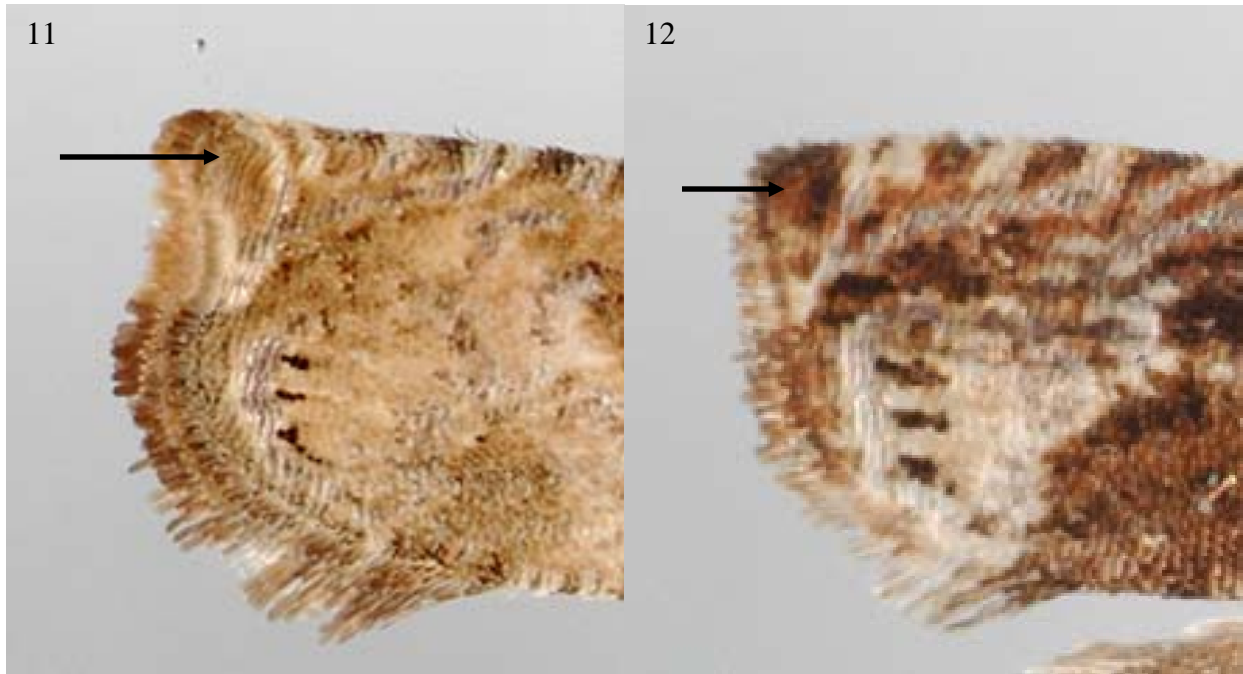
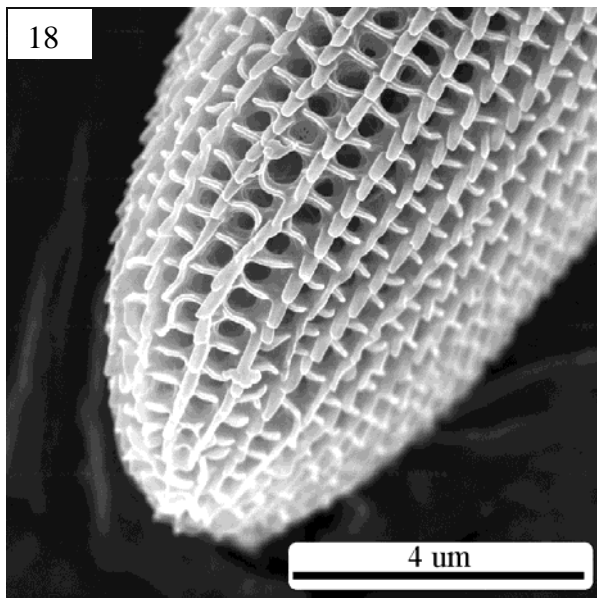
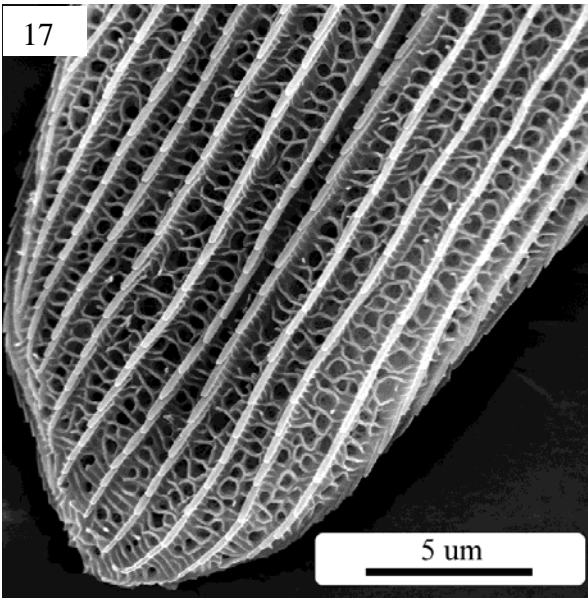
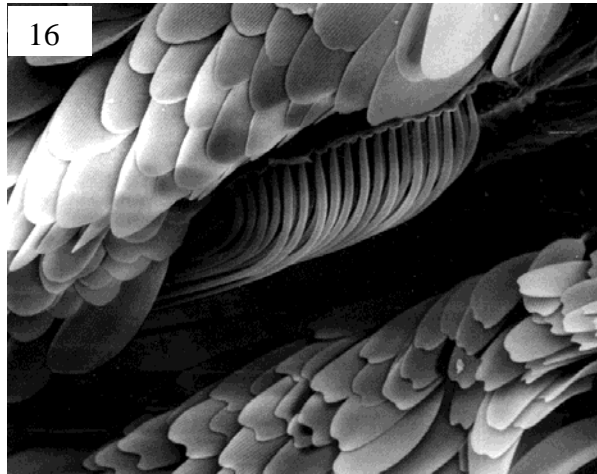
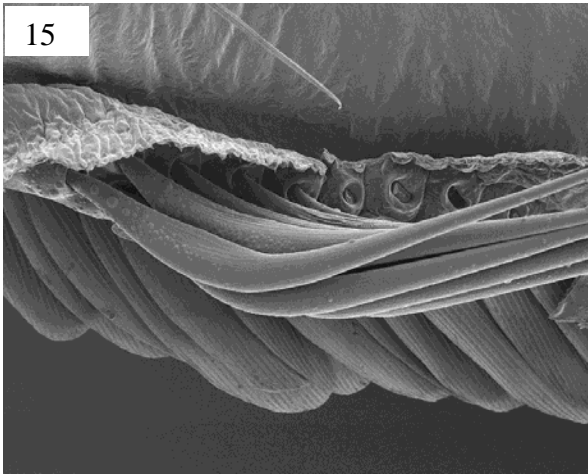
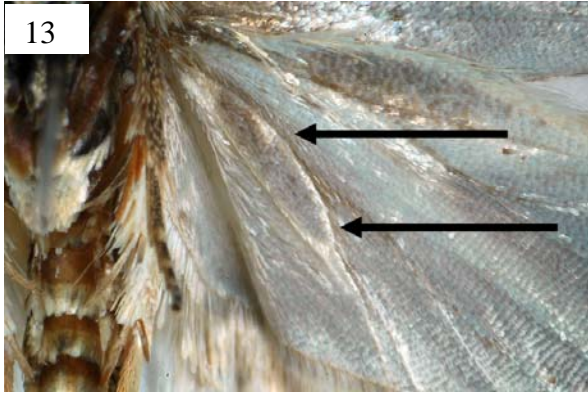
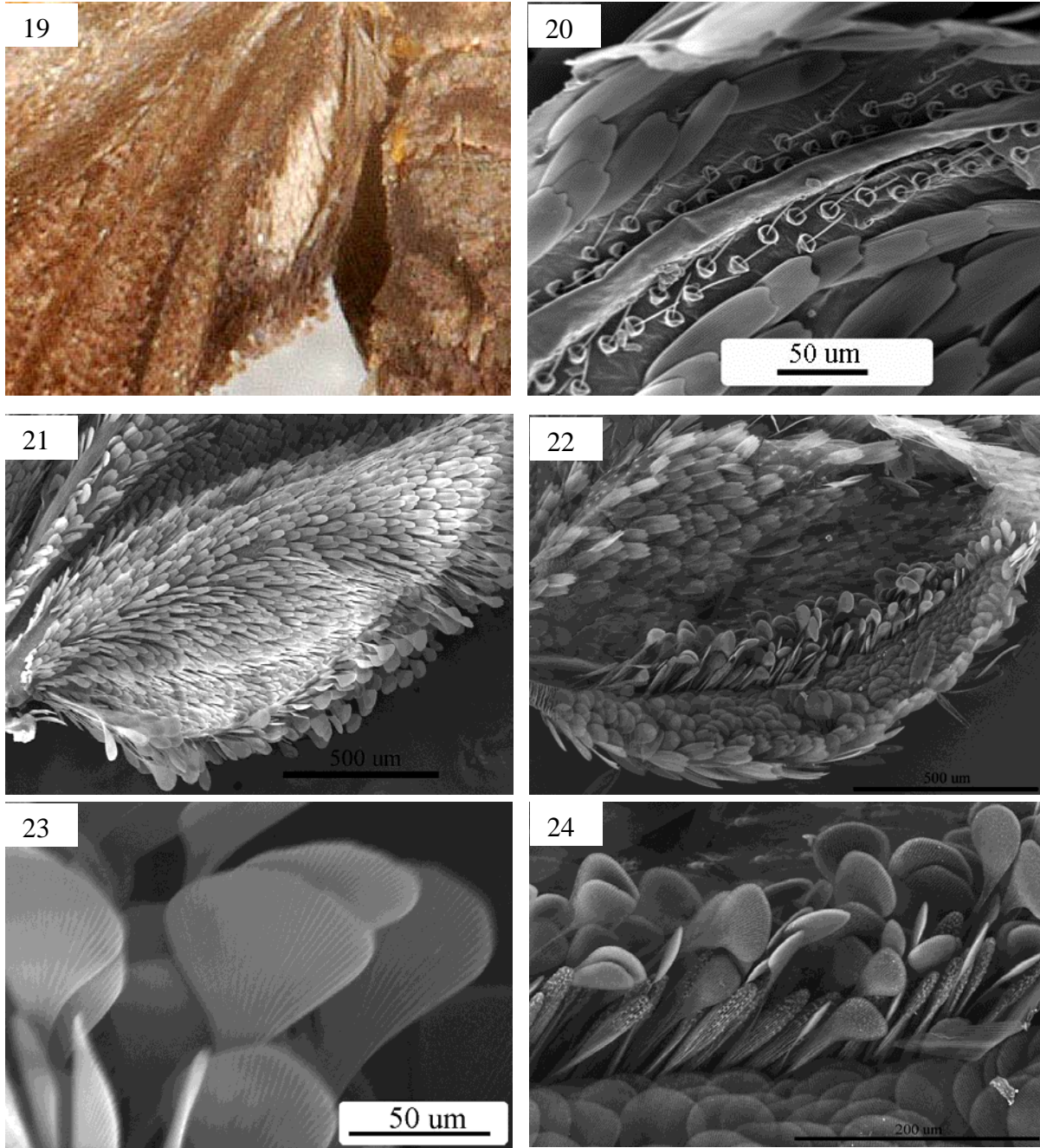


Figure 11-12. Forewing tips of Hawaiian *Cydia*. 11. Forewing tip of *Cydia mauiensis* showing sinuous termen and crescent-shaped apical patch (arrow) characteristic of the *Canavaliae* group of species. 12. Forewing tip of *Cydia walsinghamii* showing the nearly linear termen and subtriangular apical patch (arrow) typical of most Hawaiian *Cydia*.

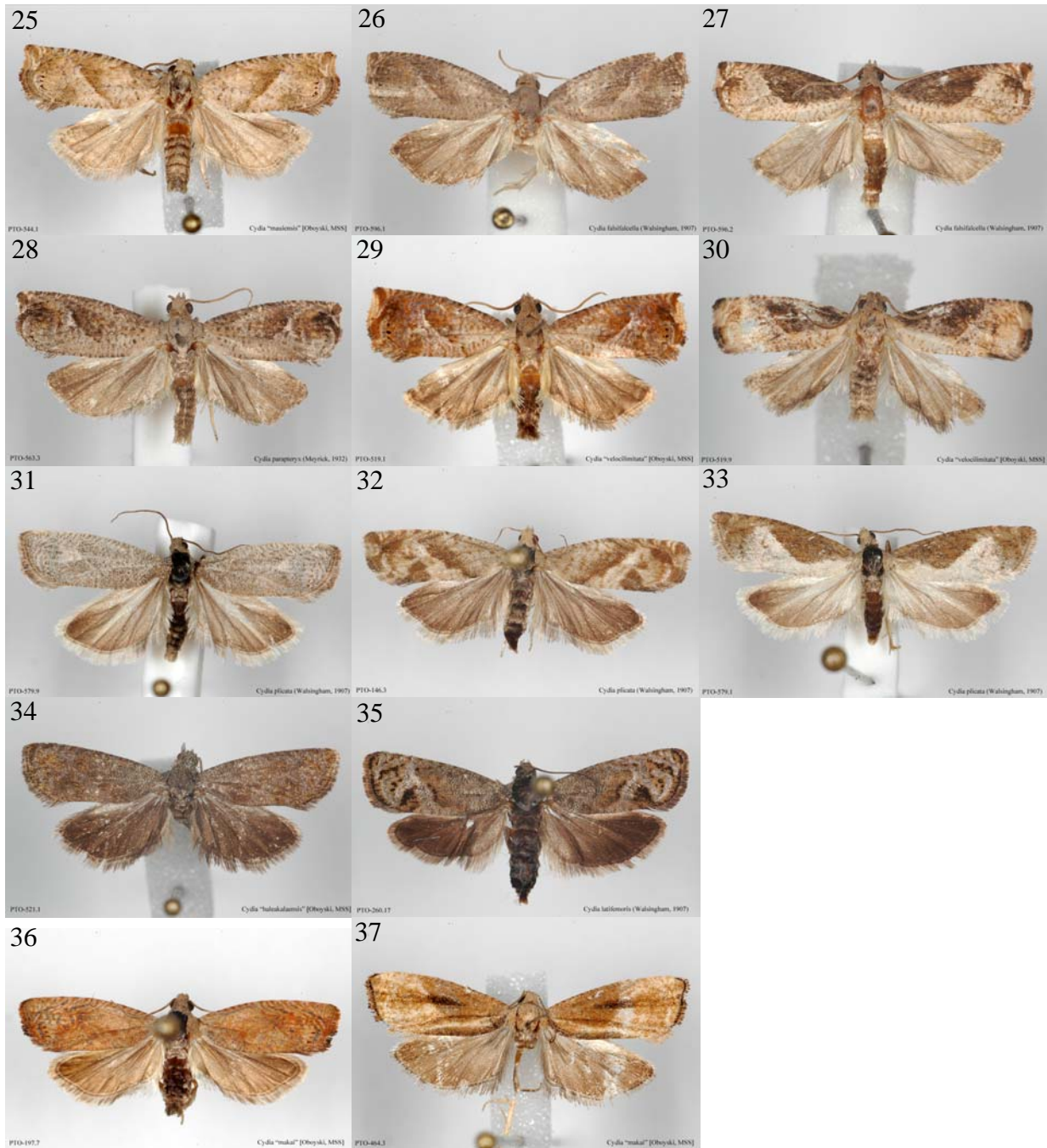


Figures 13-18. Hindwing ventral pouch and modified pecten scales. 13. Ventral view of hindwing pouch (arrows) of *Cydia plicata*, 14. Dorsal view showing opening to pouch (arrow) below cubital in *C. plicata*, 15. Base of modified pecten scales of *C. plicata* bending into pouch, 16. Base of modified pecten scales of *C. latiferreana* from California bending into pouch, 17. Tip of modified pecten scale of *C. plicata*, 18. Tip of pecten modified scale of *C. latiferreana*.



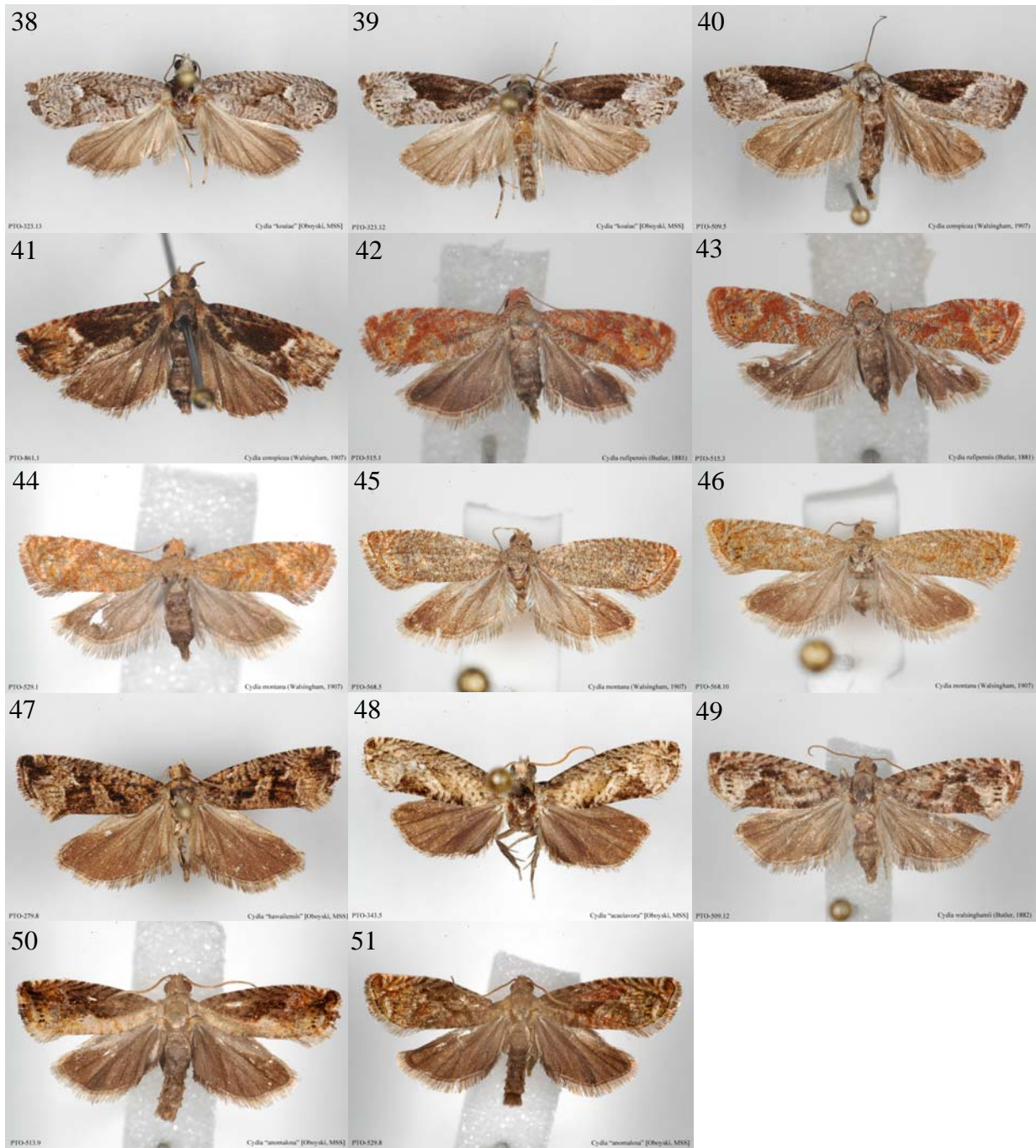


Figures 19-24. Hindwing anal roll with modified scales. 19. *C. anomalosa* showing white scales within dorsal pocket of hindwing anal roll. 20. SEM of thecae (androconial scales) along vein A3 in male hindwing of *C. latiferreana*. 21. SEM of hindwing anal roll of *C. anomalosa*. 22. SEM of hindwing anal roll of *C. latiferreana*. 23. SEM of modified scales along the margin of *C. anomalosa* anal roll showing phylliform sex scales. 24. SEM of modified scales along the margin of *C. latiferreana* anal roll showing phylliform and fusiform sex scales.



Figures 25-37. Hawaiian *Cydia* adult habitus. 25. *C. mauiensis*. 26. *C. falsifalcella*. 27. *C. falsifalcella*. 28. *C. parapteryx*. 29. *C. velocilimitata*. 30. *C. velocilimitata*. 31. *C. plicata*. 32. *C. plicata*. 33. *C. plicata*. 34. *C. haleakalaensis*. 35. *C. latifemoris*. 36. *C. makai*. 37. *C. makai*



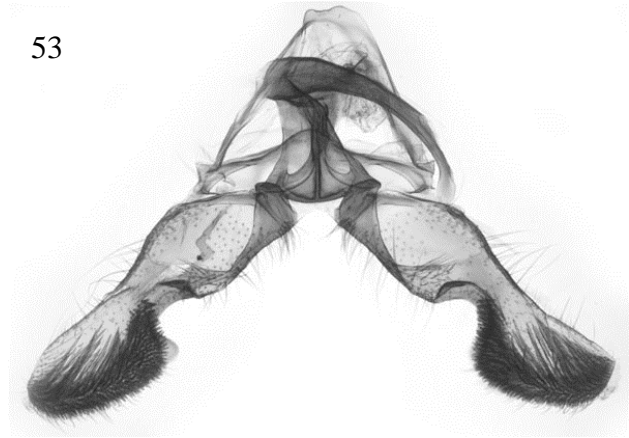


Figures 38-51. Hawaiian *Cydia* adult habitus (continued). 38. *C. koaiae*. 39. *C. koaiae*. 40. *C. conspicua*. 41. *C. conspicua*. 42. *C. rufipennis*. 43. *C. rufipennis*. 44. *C. montana*. 45. *C. montana*. 46. *C. montana*. 47. *C. hawaiiensis*. 48. *C. acaciavora*. 49. *C. walsinghamii*. 50. *C. anomalous*. 51. *C. anomalous*

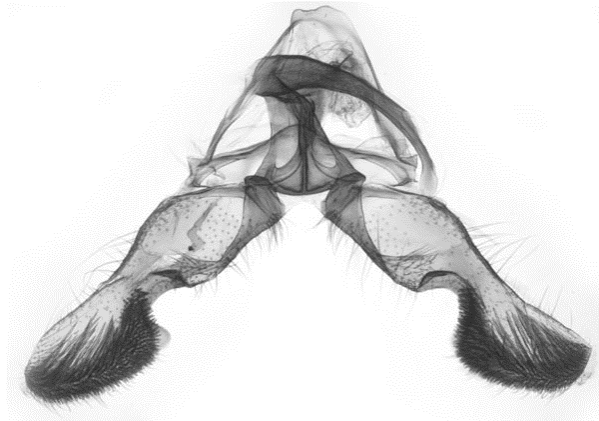
52



53



54



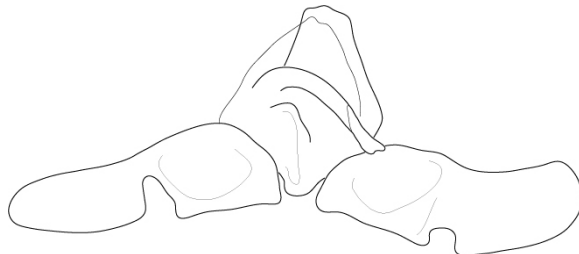
55



56

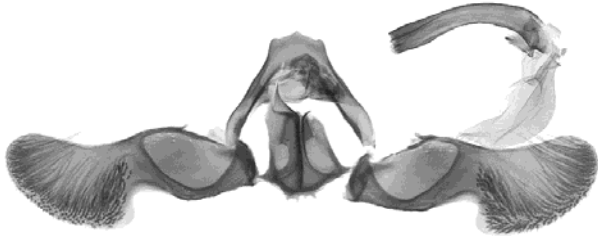


57

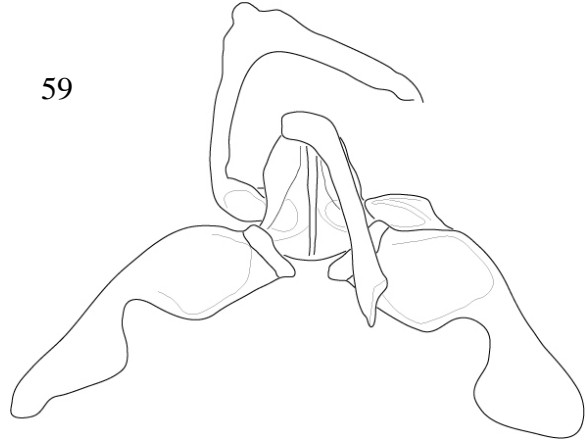


Figures 52-57. Male genitalia 52. *Cydia gypsograptia* – male holotype, slide BM 9543. 53. *C. mauiensis* – male holotype, slide PTO-s254. 54. *C. falsifalcella* – male holotype, slide BM 2051. 55. *C. parapteryx* – slide PTO-s252. 56. *C. velocilimitata* – slide PTO-s170. 57. *C. plicata* – male holotype, slide BM 1885.

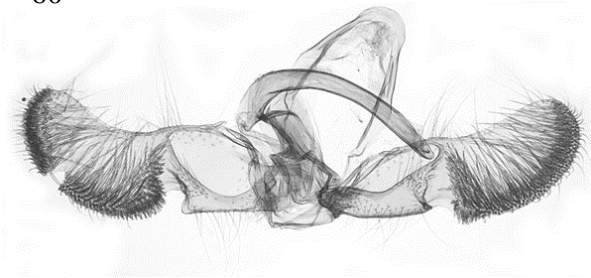
58



59



60



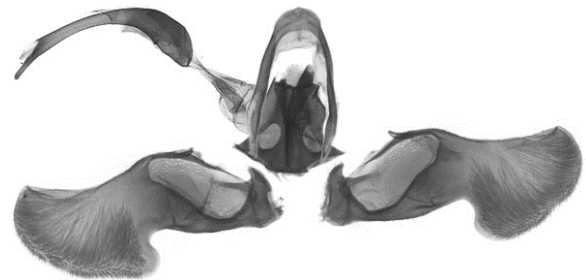
61



62

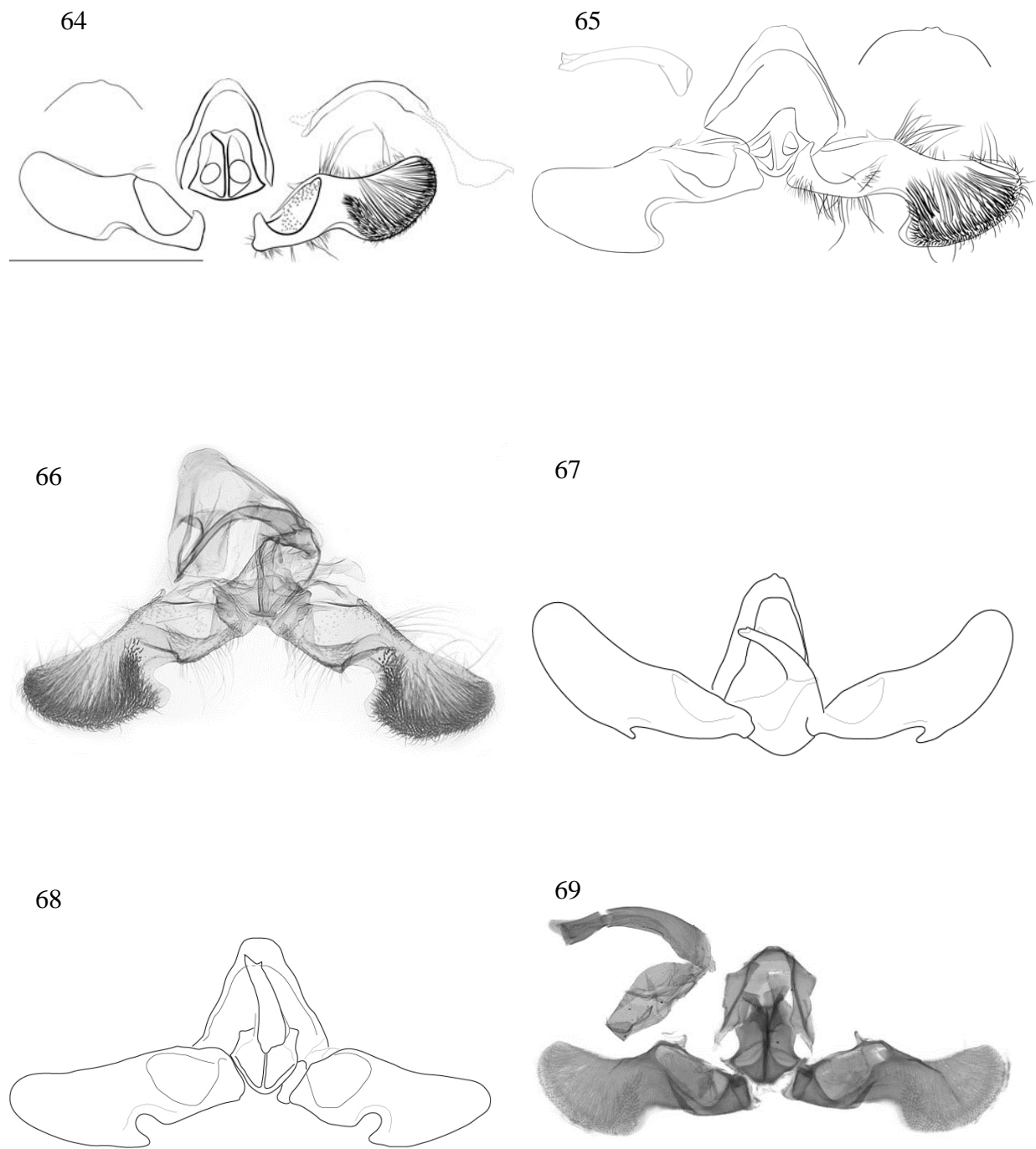


63

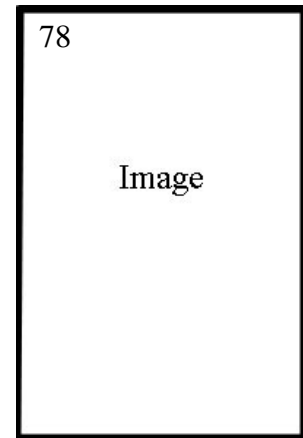
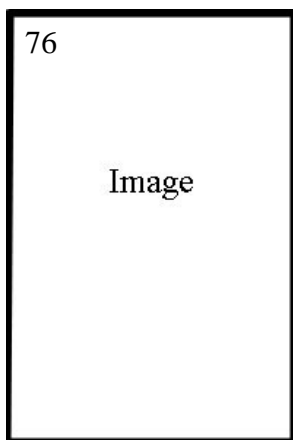
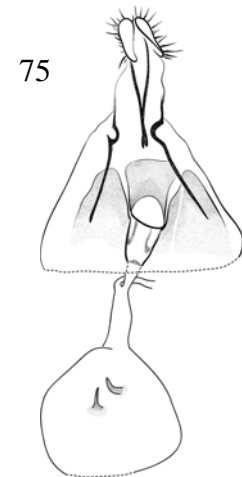
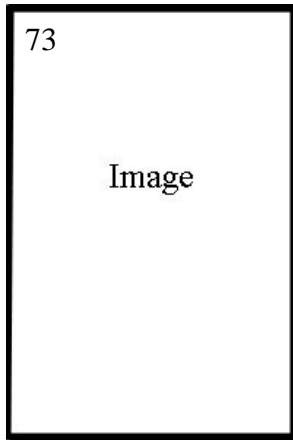
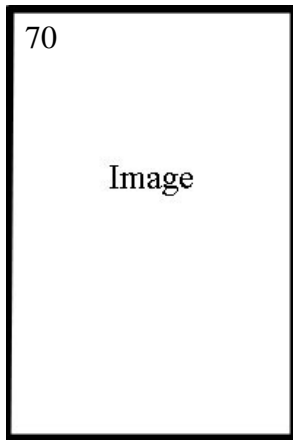


Figures 58-63. Male genitalia (continued). 58. *Cydia haleakalaensis* – slide PTO-s339. 59. *C. latifemoris* – allotype, slide BM 2053. 60. *C. makai* – slide PTO-s311. 61. *C. rufipennis* – slide BM 2058. 62. *C. montana* – slide PTO-s323. 63. *C. koaiae* – slide PTO-s333.



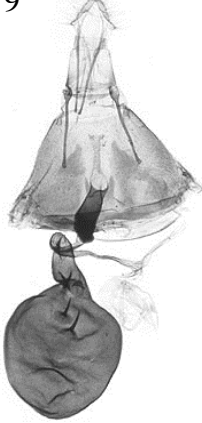


Figures. 64-69. Male genitalia (continued). 64. *Cydia conspicua* – slide PTO-s335. 65. *C. hawaiiensis* – slide PTO-s302. 66. *C. acaciavora* – slide PTO-s307. 67. *C. walsinghamii* – slide BM 1892. 68. *C. crassicornis* – holotype, slide BM 1880). 69. *C. anomalousa* – slide PTO-s342.

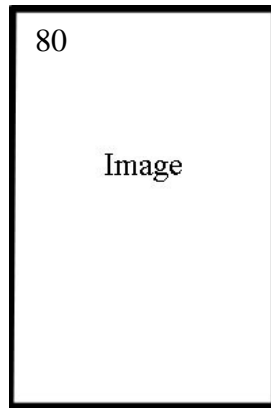


Figures 70-78. Female genitalia. 70. *Cydia chlorostola* – holotype, slide BM 9546 Clarke. 71. *C. mauiensis* – slide PTO-s154. 72. *C. falsifalcella* – slide PTO-s183. 73. *C. parapteryx* – paralectotype, slide BM 7549. 74. *C. plicata* – allotype, slide BM 1886. 75. *C. obliqua* – holotype, slide BM 1882. 76. *C. storeella* – holotype, slide BM 1881. 77. *C. haleakalaensis* – slide PTO-s318. 78. *C. latifemoris* – holotype, slide BM 2054.

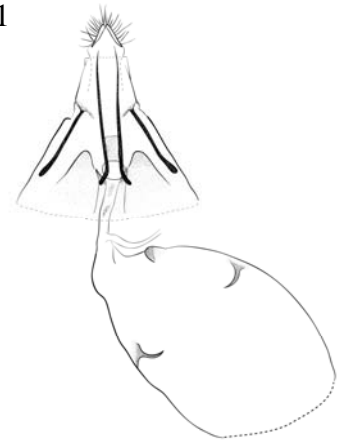
79



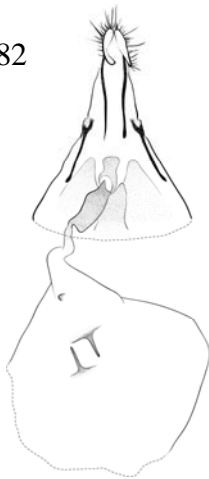
80



81



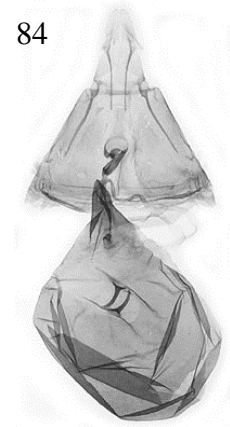
82



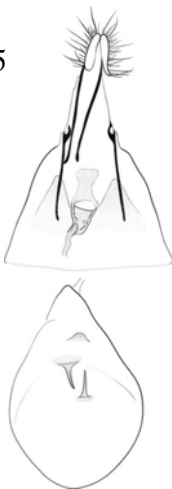
83



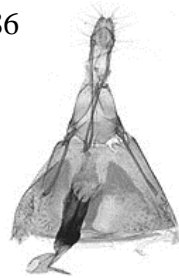
84



85



86



Figures 79-86. Female genitalia (continued). 79. *Cydia makai* – slide PTO-s147. 80. *C. rufipennis* – slide BM 2057. 81. *C. montana* – slide PTO-s322. 82. *C. conspicua* – slide PTO-s336. 83. *C. hawaiiensis* – slide PTO-s42. 84. *C. acaciavora* – slide PTO-s315. 85. *C. walsinghamii* – slide PTO-s308. 86. *C. anomalosa* – slide PTO-s169.



